

SOFT TISSUE PATHOLOGY

- Number of entities
- Pseudosarcomas
- Benign mimics

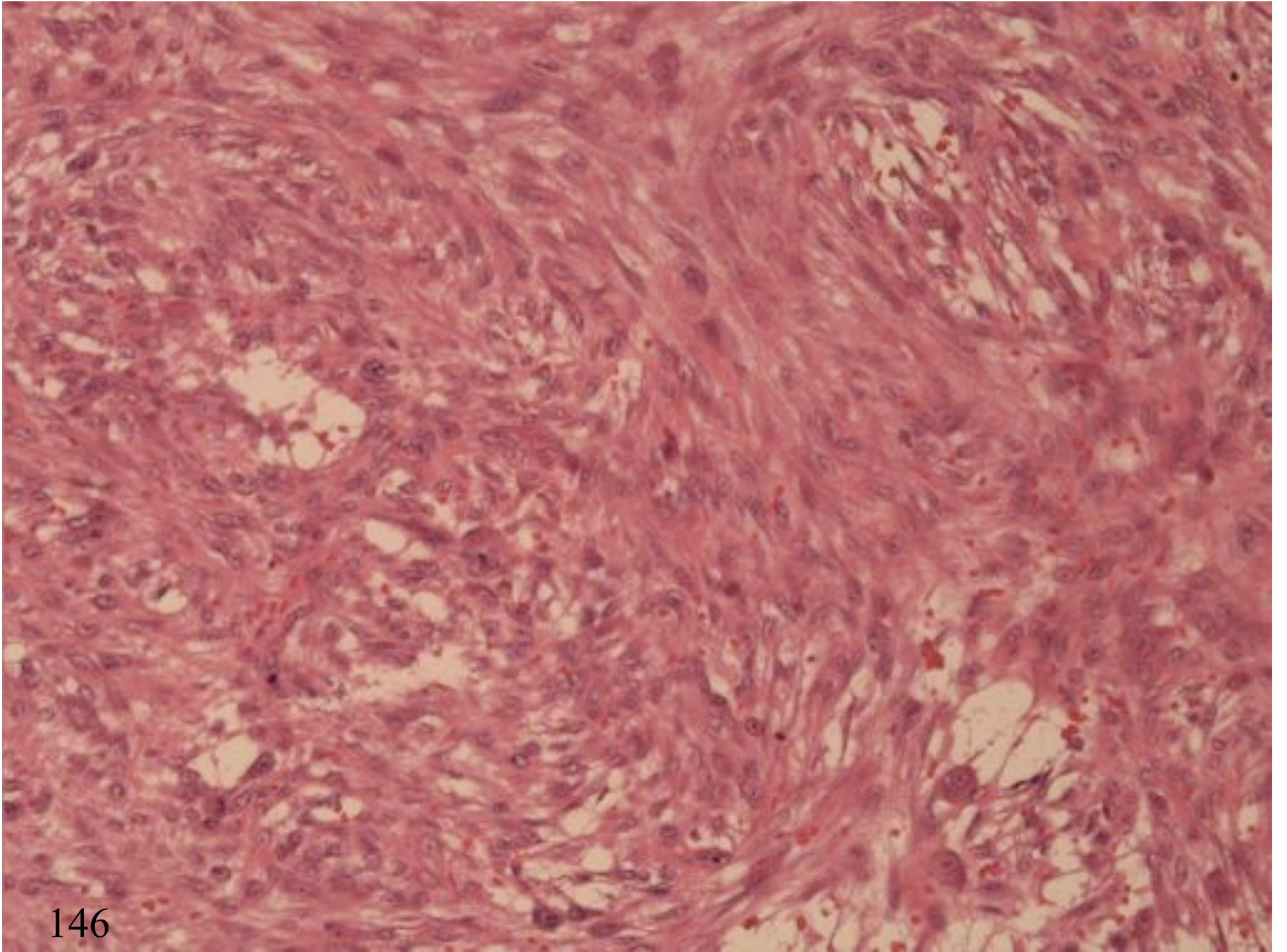
PSEUDOSARCOMA

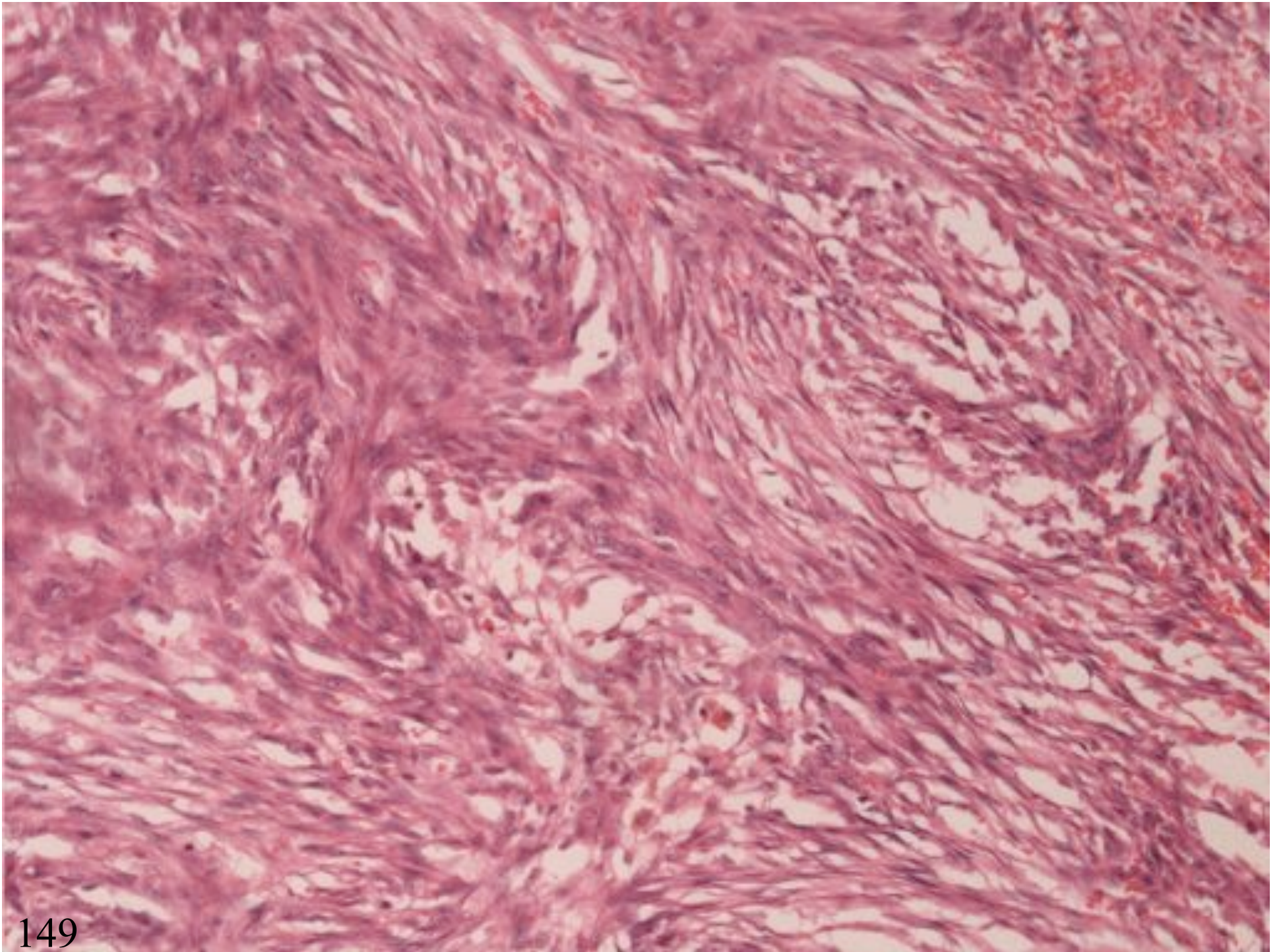
- Rapid growth
- Location
- Histology
 - cellularity
 - mitoses
 - pleomorphism

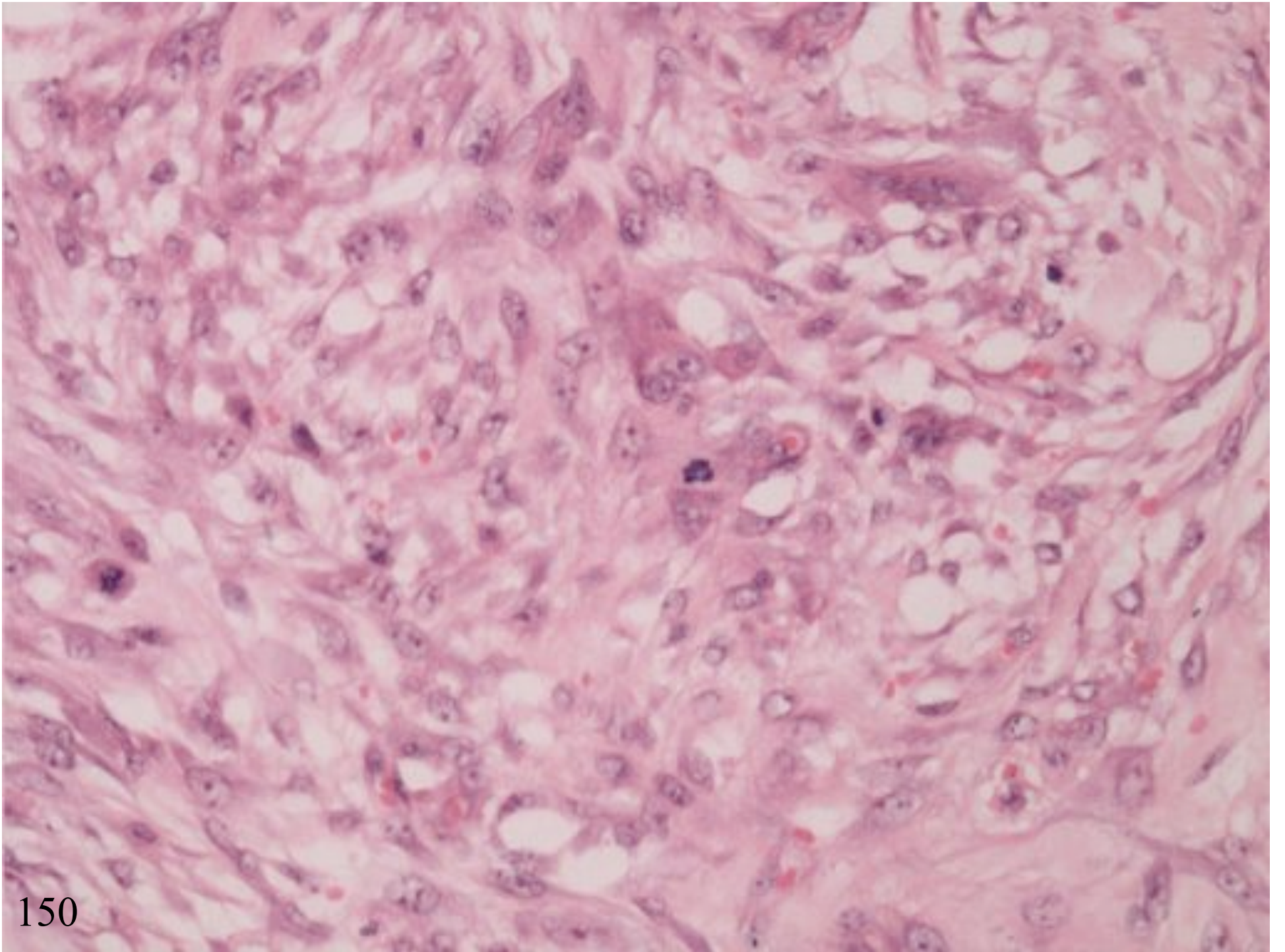
FIBROBLASTIC LESIONS

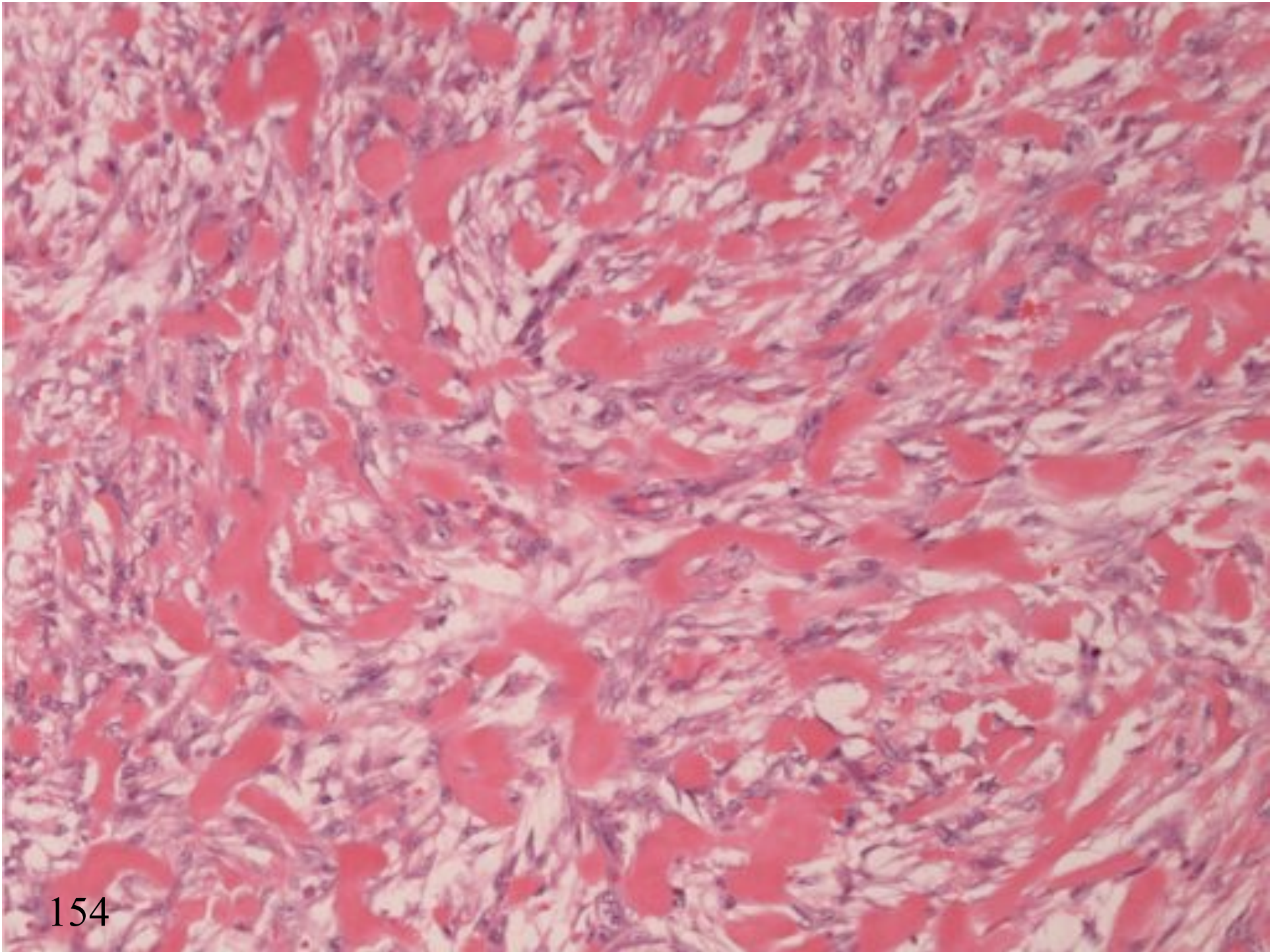
NODULAR FASCIITIS

- Young adults
- Growth over a few weeks
- Forearm
- Fascia, subcutis, muscle



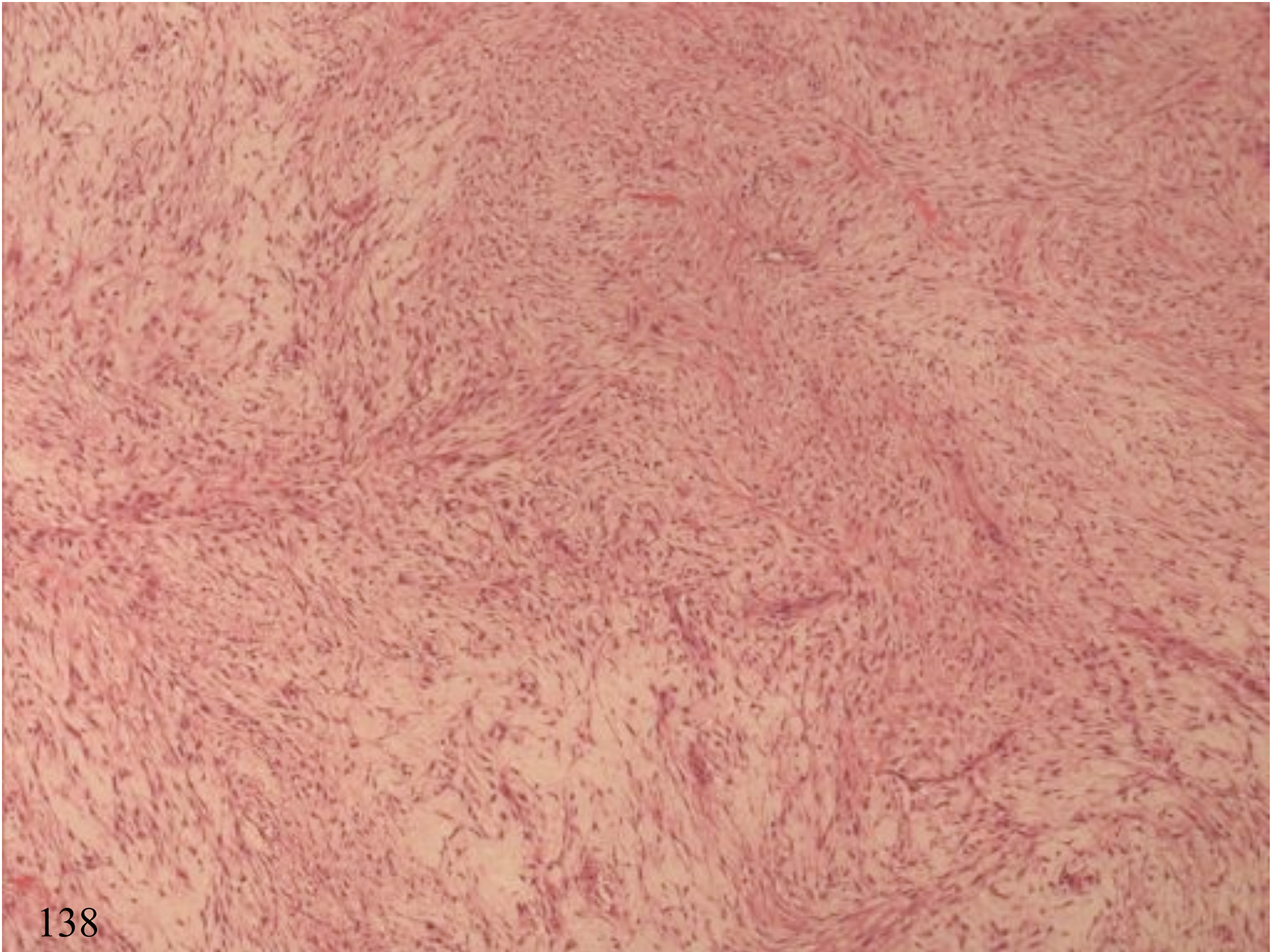


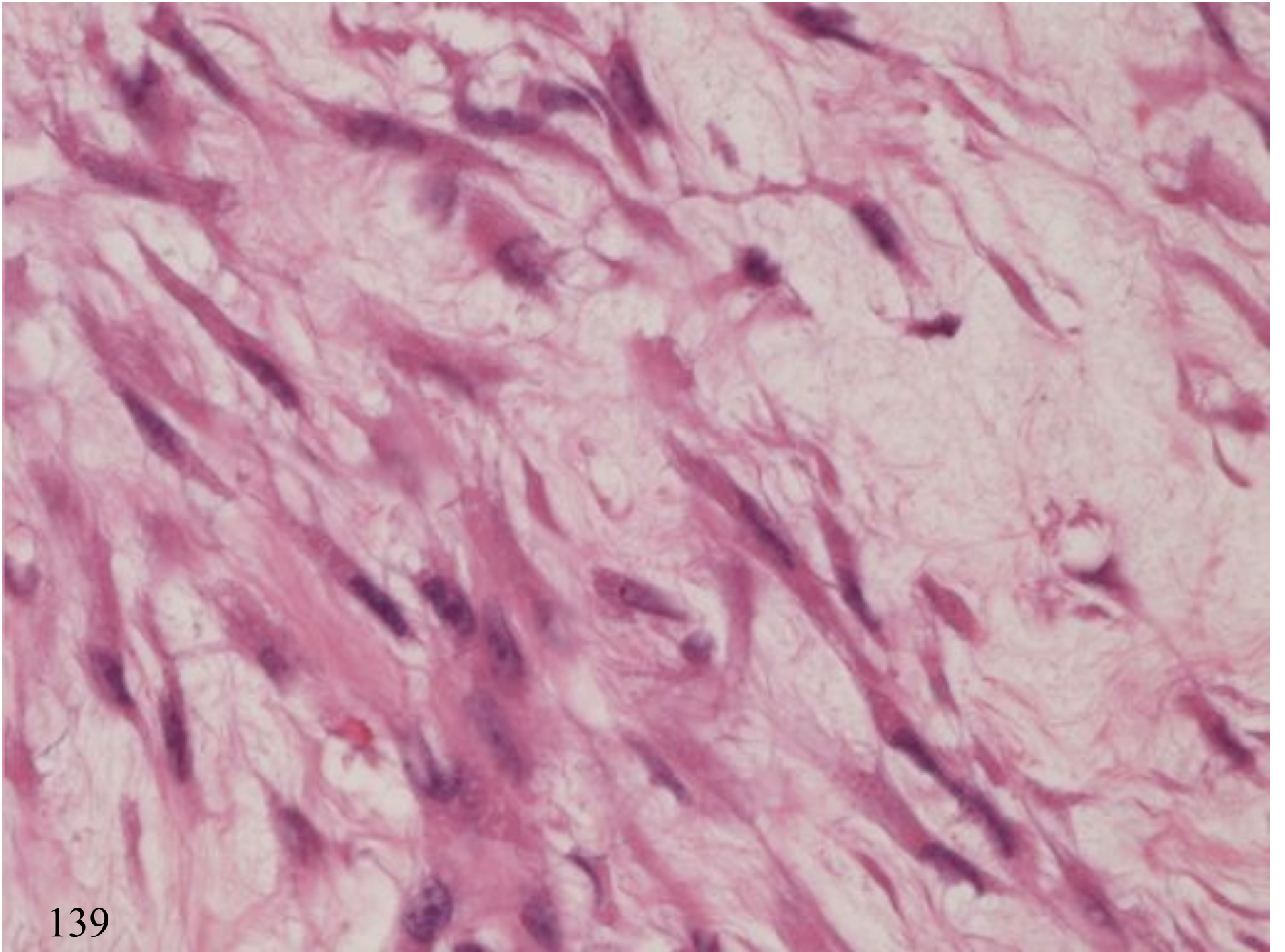


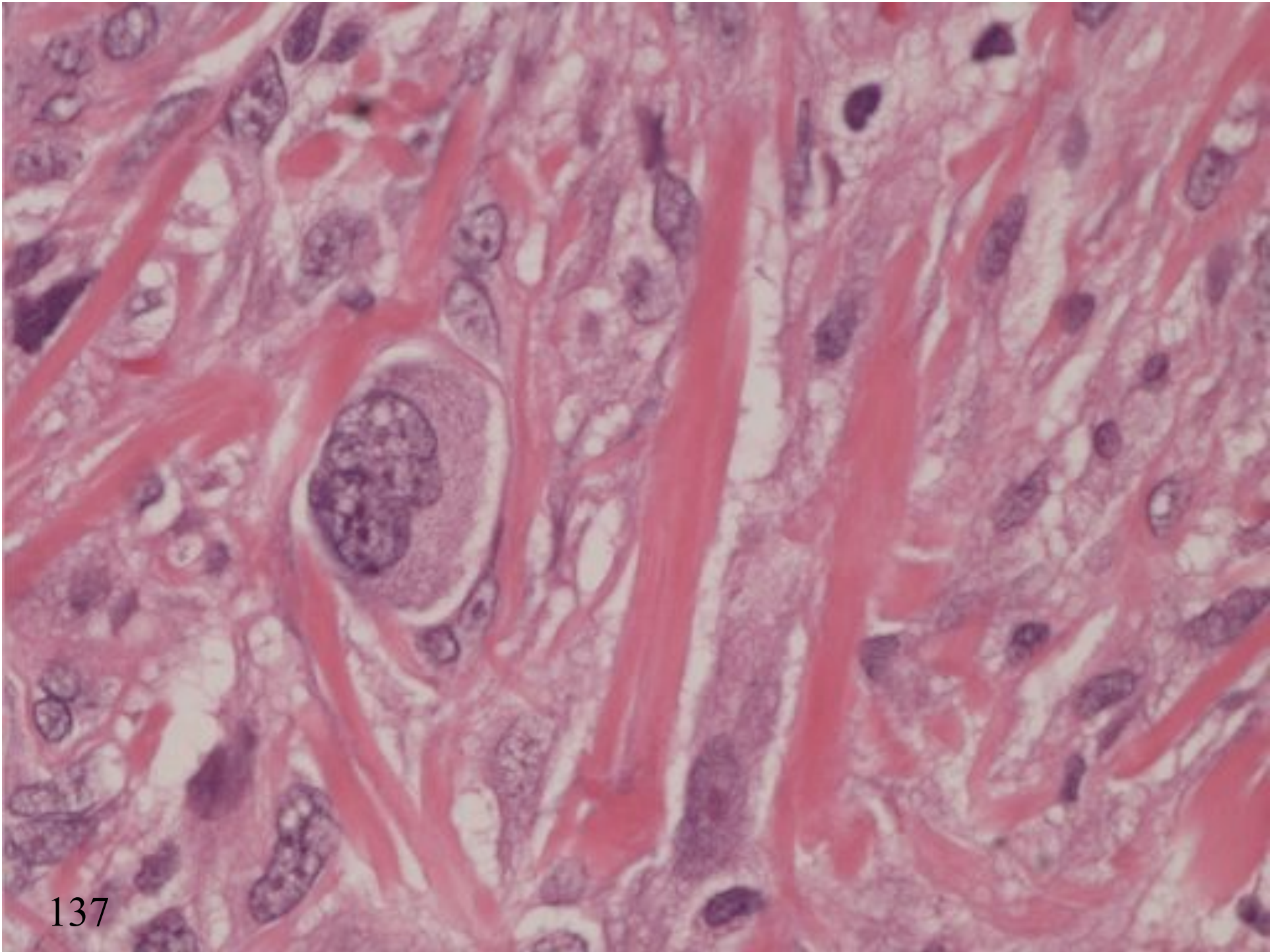


NF VARIANTS

- Dermal fasciitis
- Intravascular fasciitis
- Cranial fasciitis

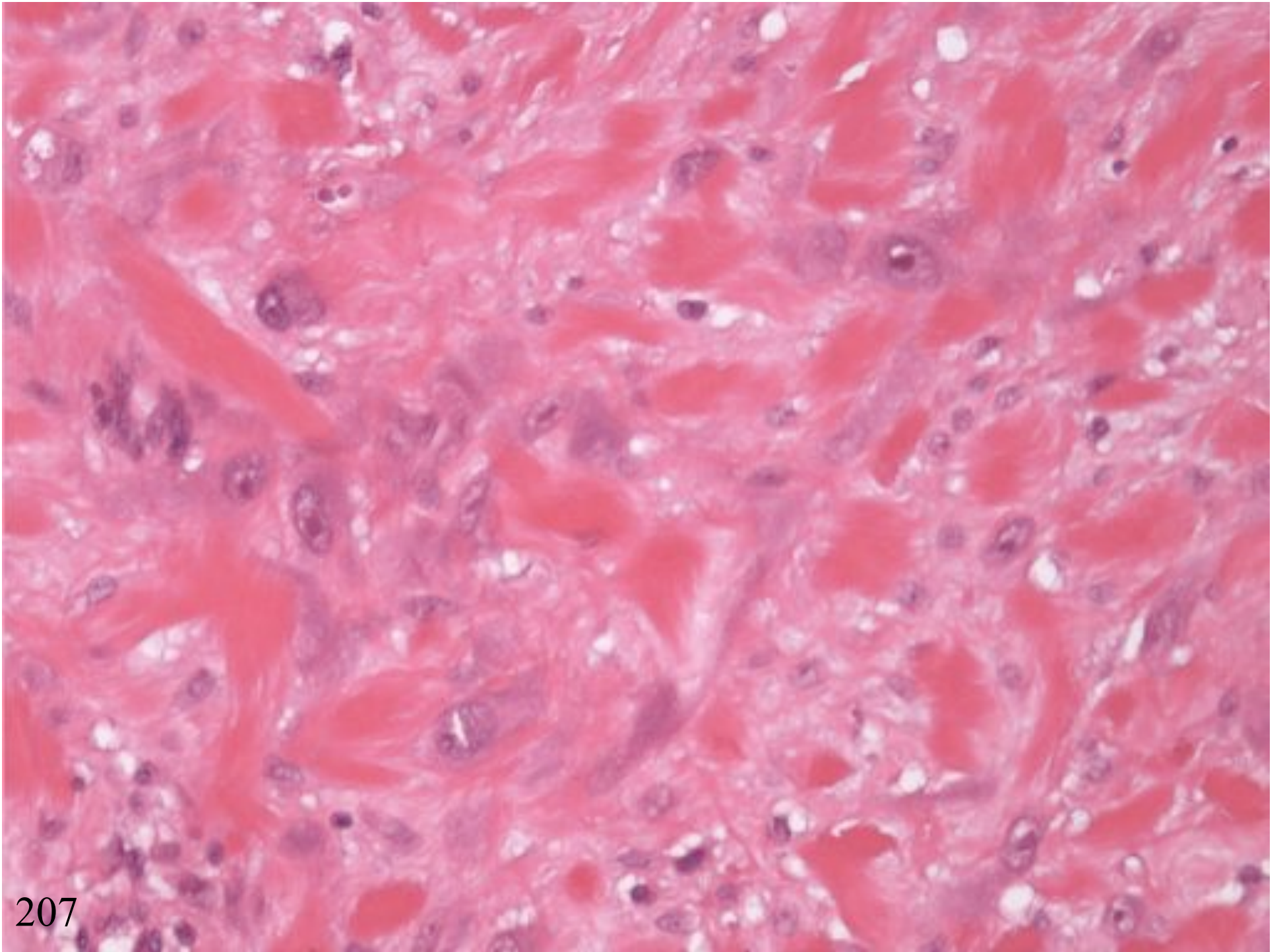






PROLIFERATIVE FASCIITIS

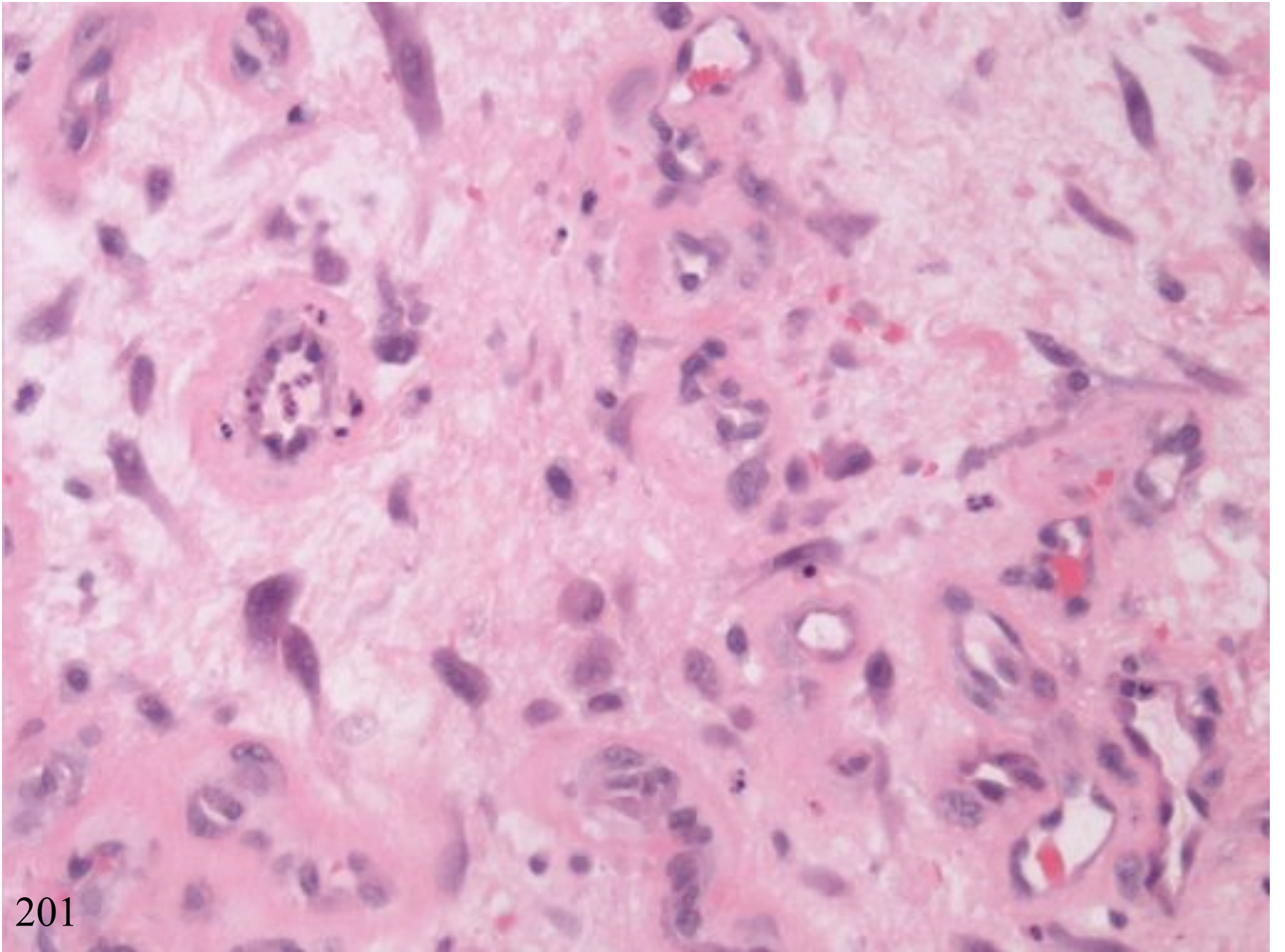
- Middle-aged adults
- Subcutis of extremities
- Rapid growth
- Proliferative myositis (flat muscles of trunk/shoulder)

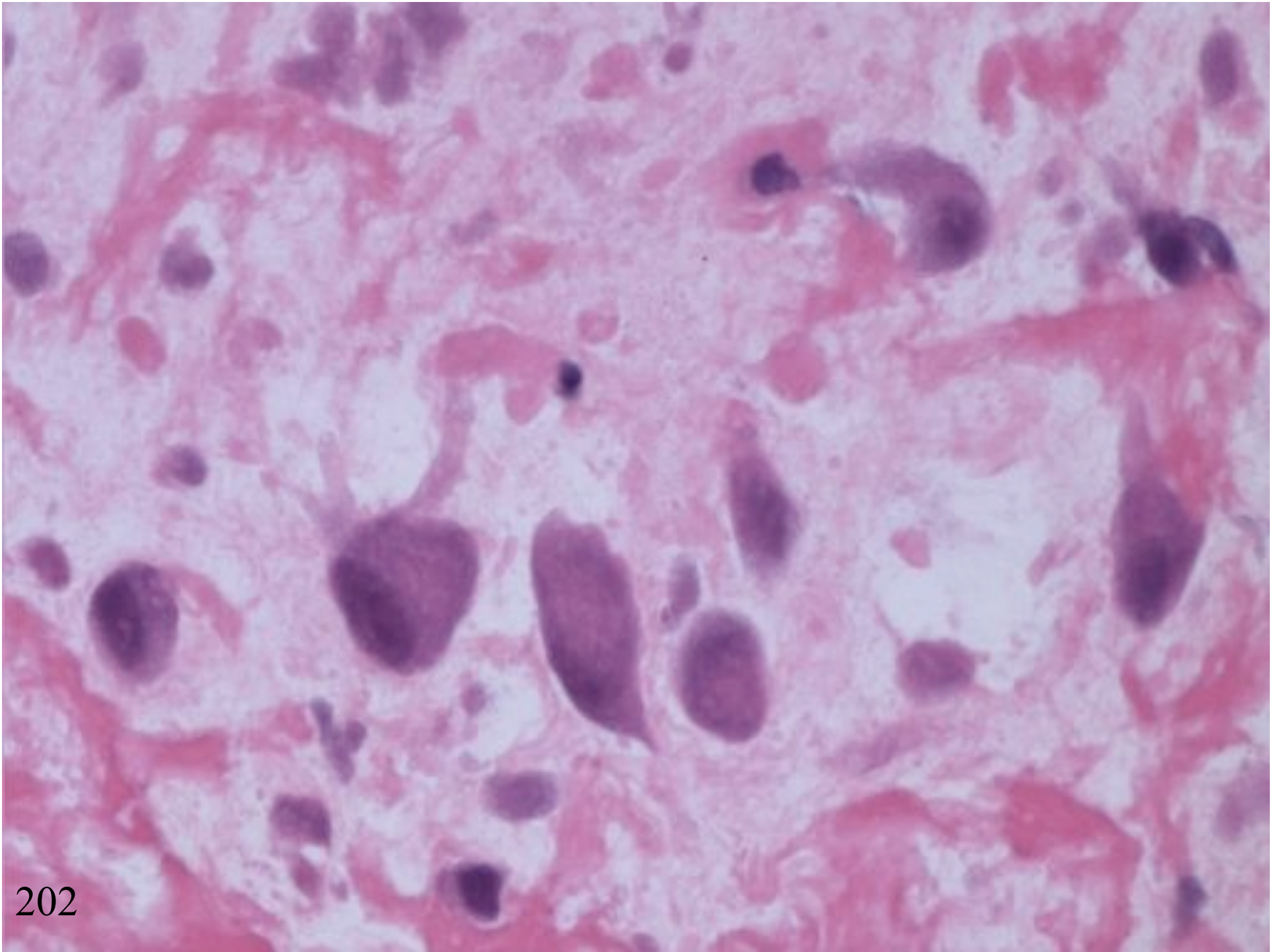


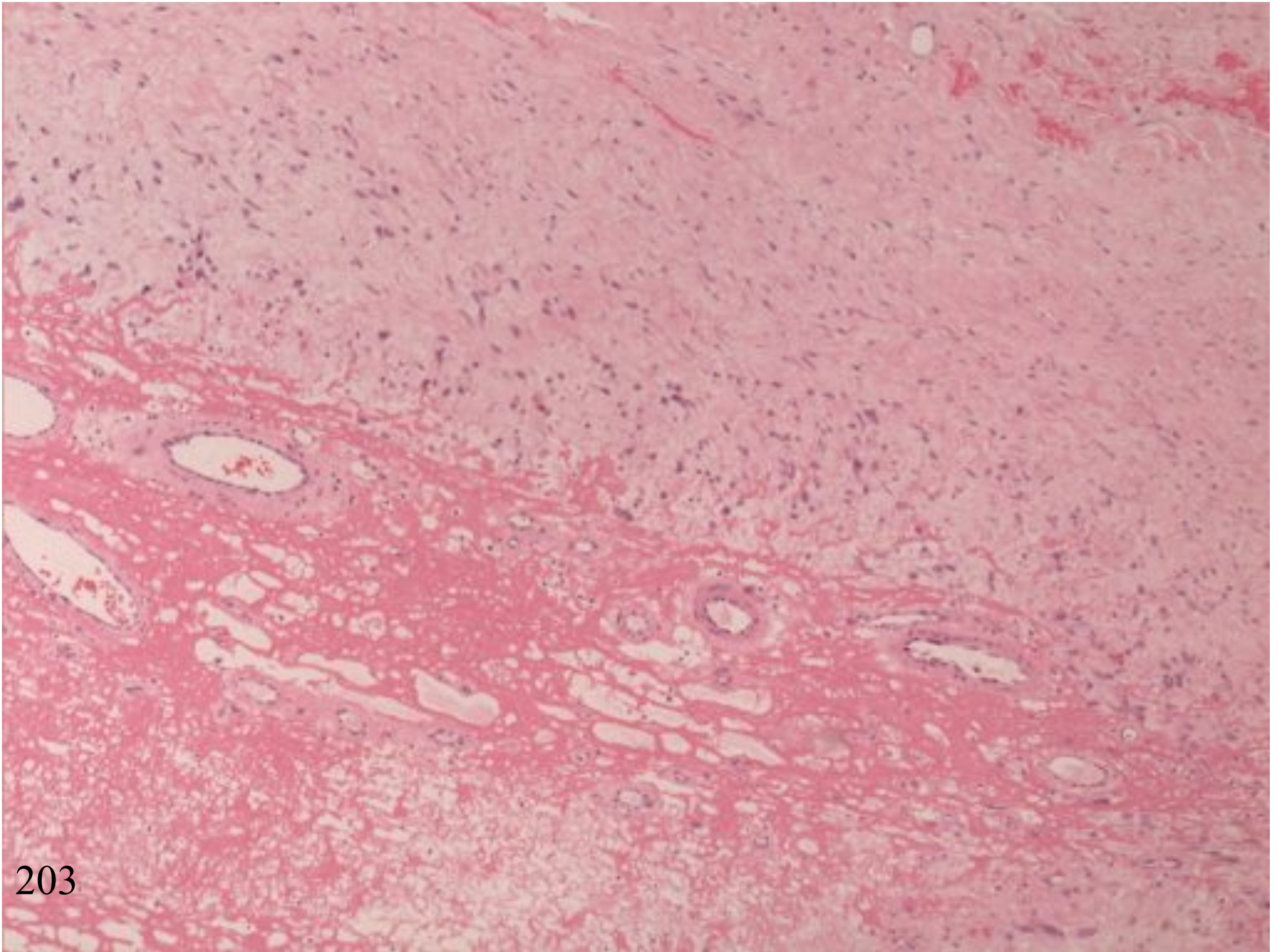
ISCHAEMIC FASCIITIS

(Atypical decubital fibroplasia)

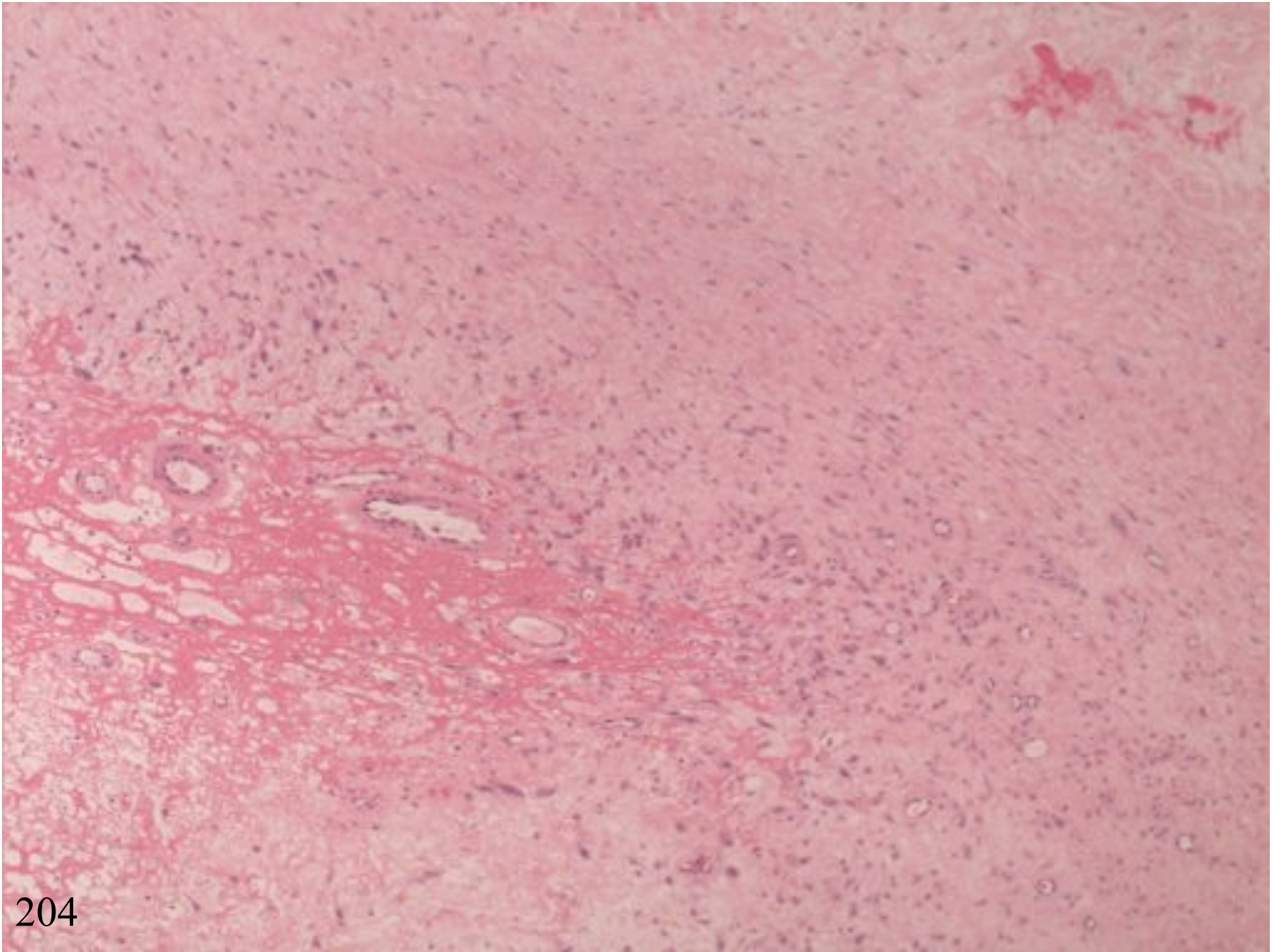
- Elderly
- Pressure points
- Subcutis
- No ulceration



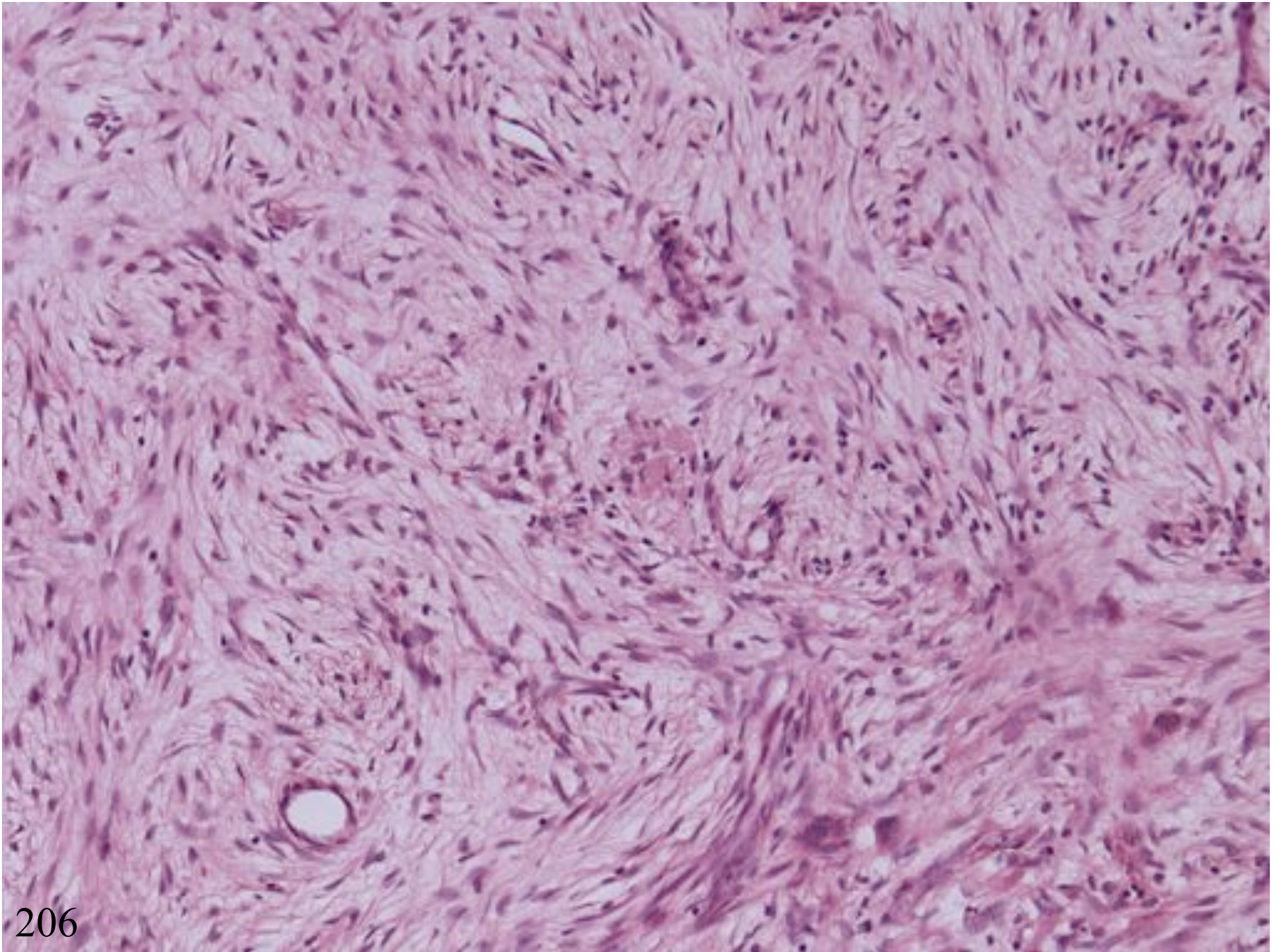


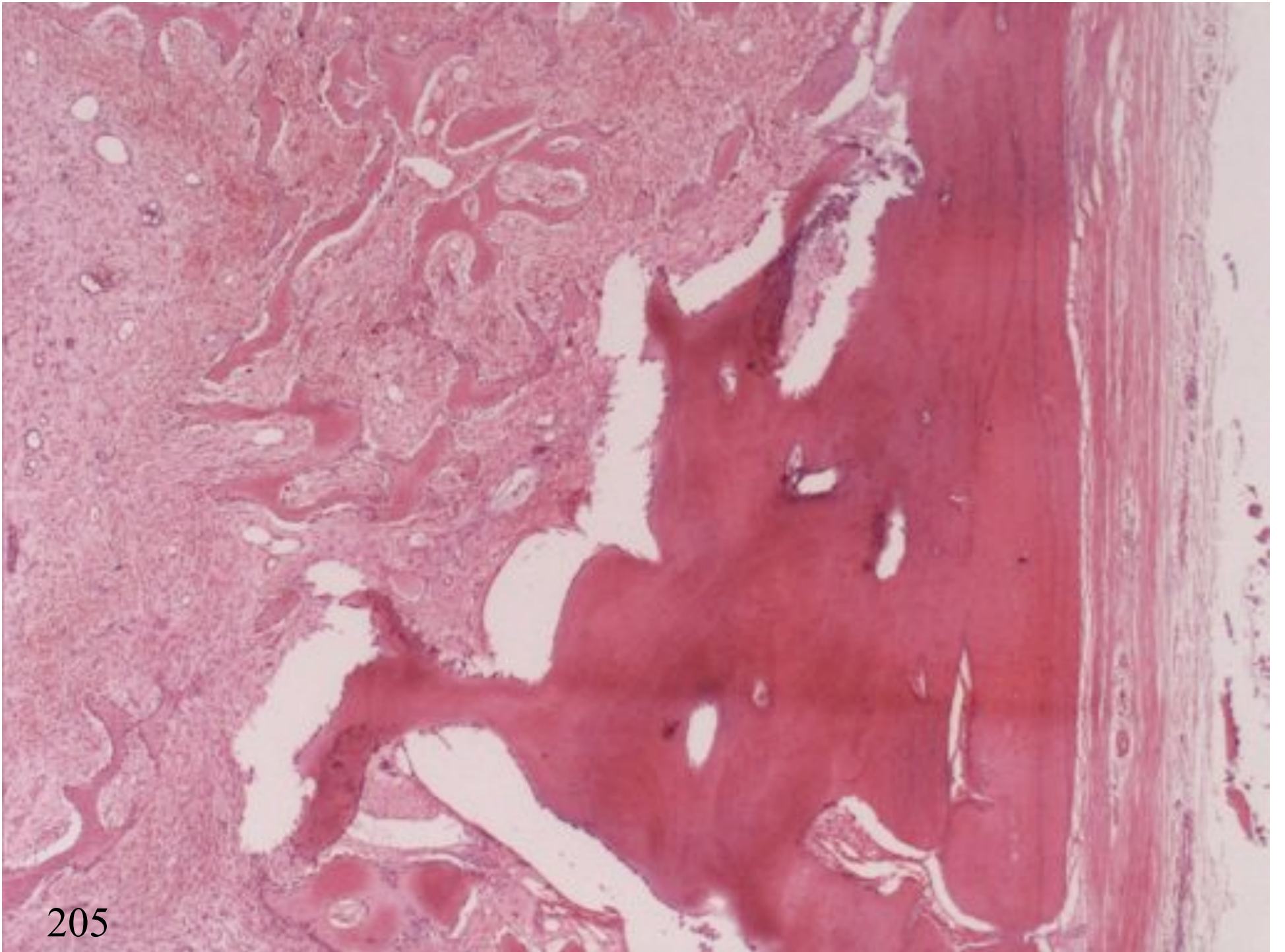


203



MYOSITIS OSSIFICANS





205

PSEUDOSARCOMATOUS MYOFIBROBLASTIC PROLIFERATIONS

- Urinary bladder
- 25% previous trauma
- Reactive fibroblasts
- Muscle markers positive
- Often cytokeratin positive
- Sometimes ALK positive

FIBROBLASTIC LESIONS

SUMMARY

- Nodular fasciitis
- Proliferative fasciitis
- Ischaemic fasciitis
- Pseudo-sarcomatous myofibroblastic proliferations