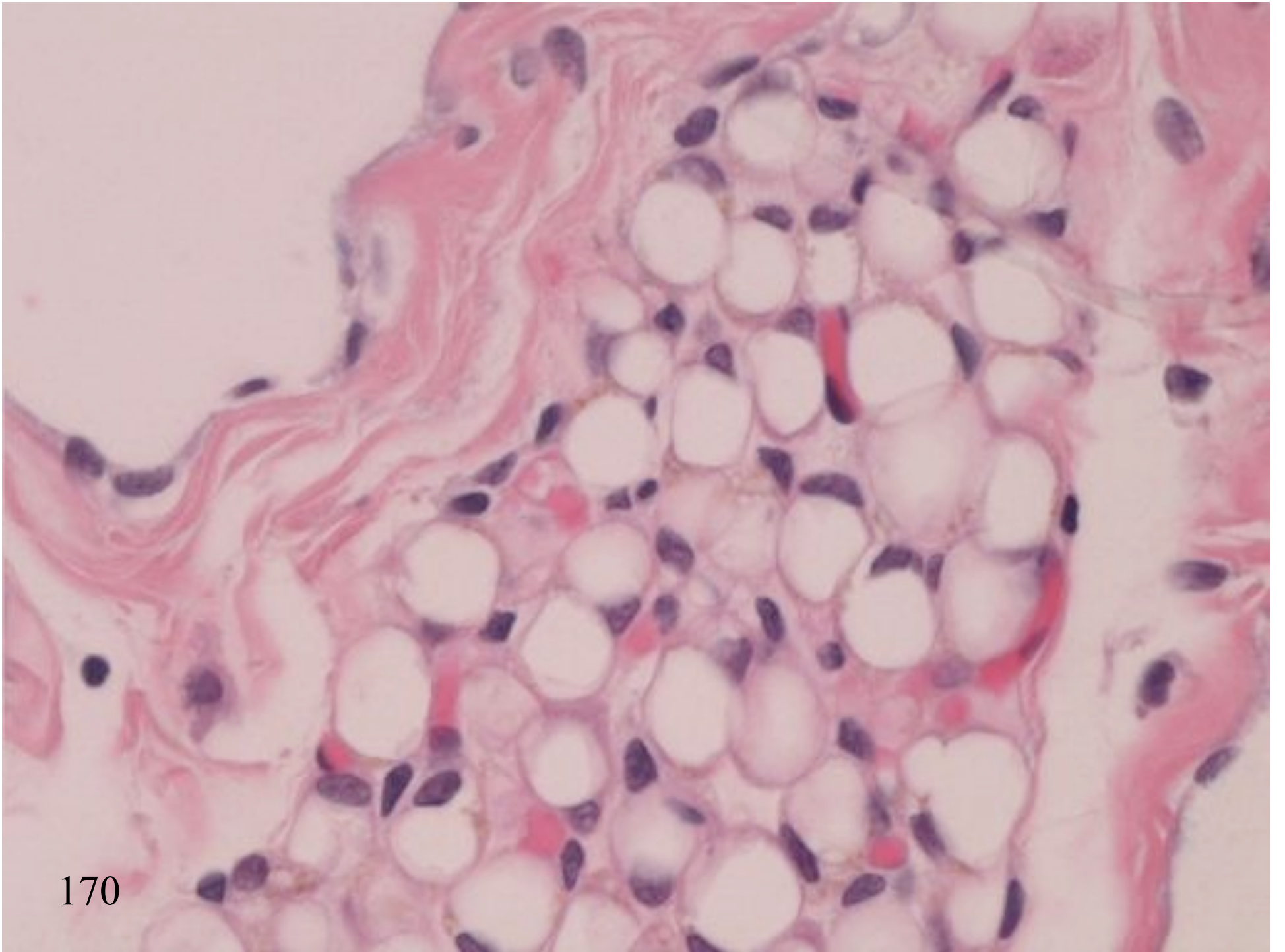
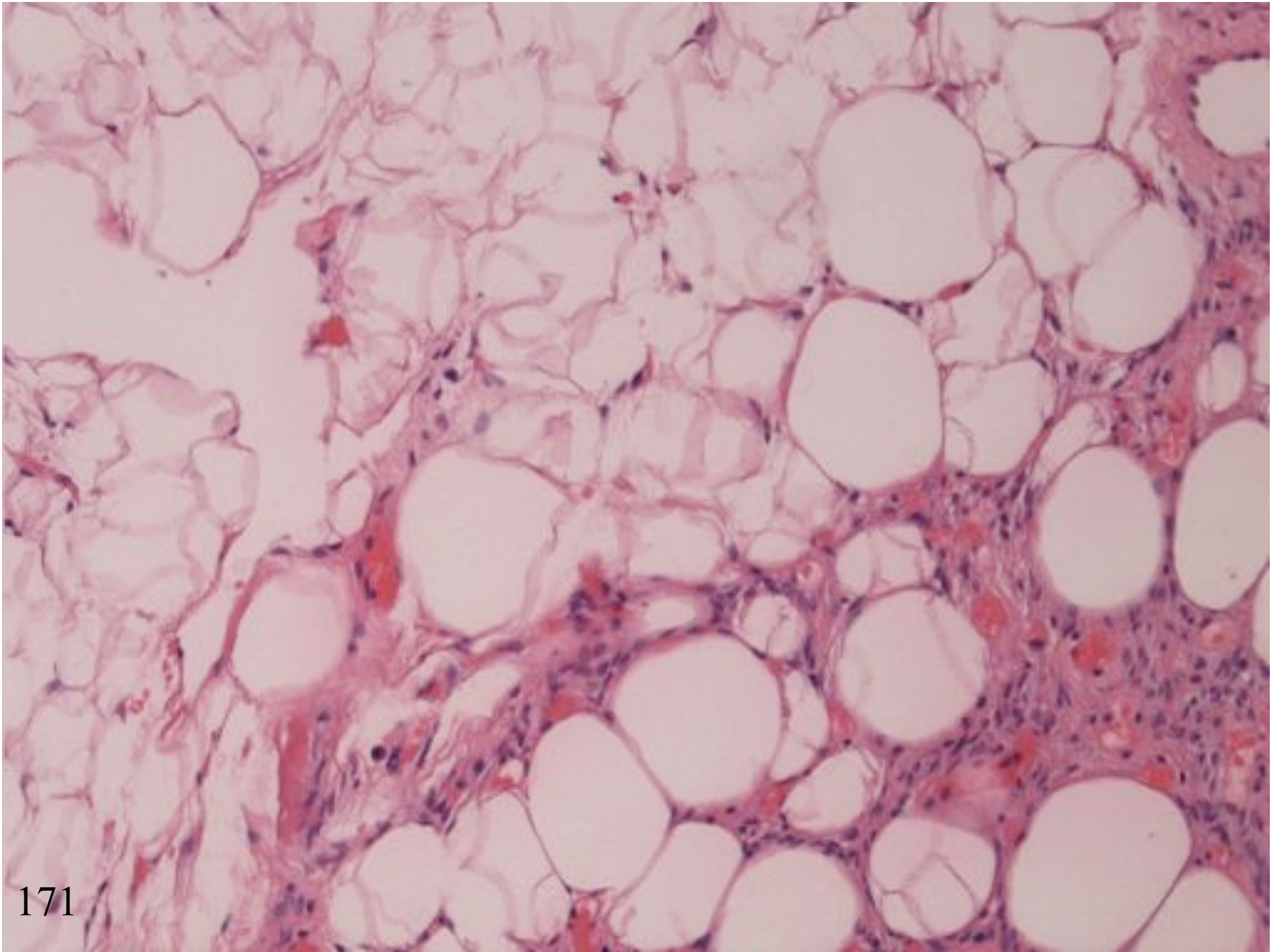
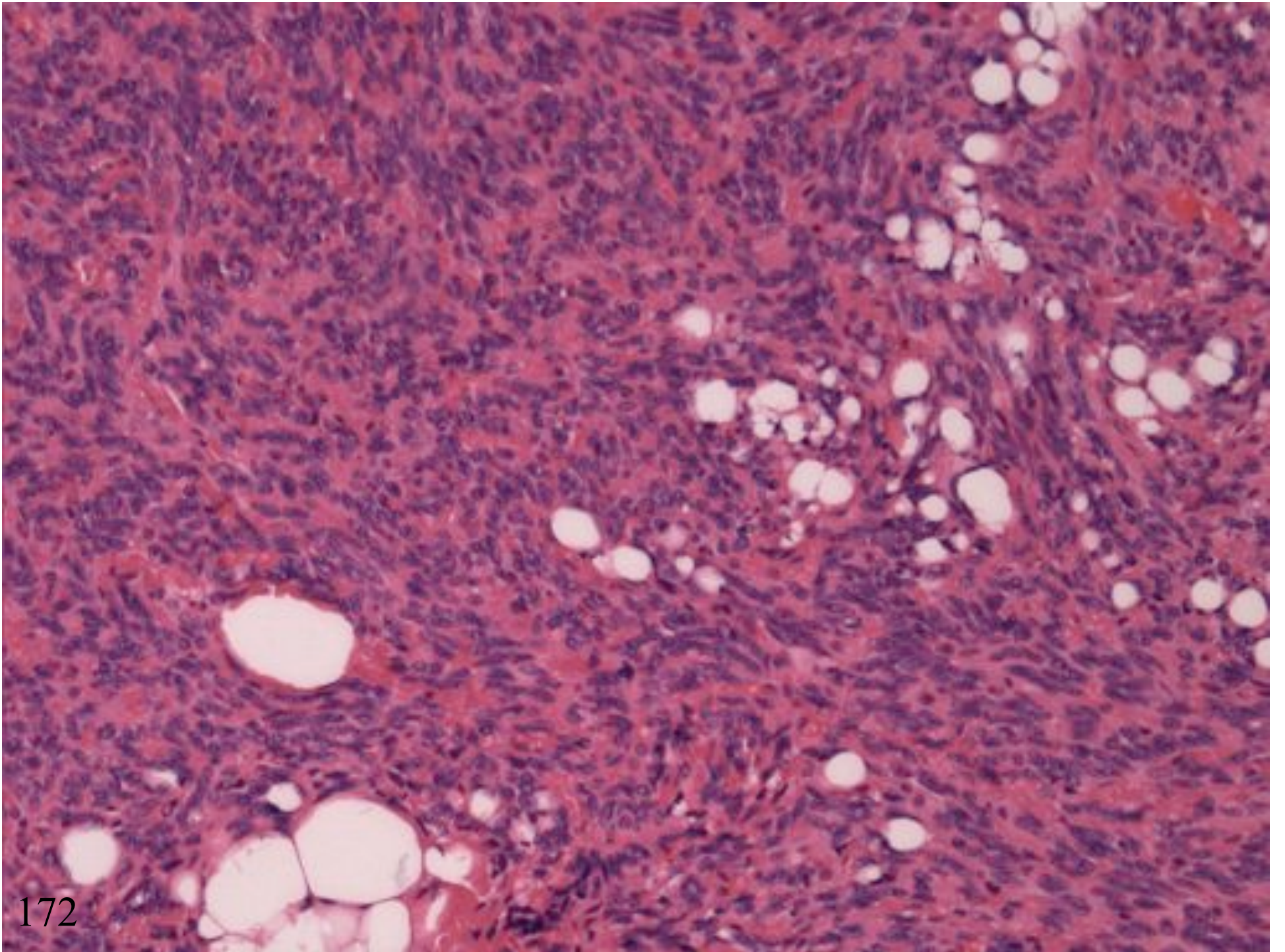
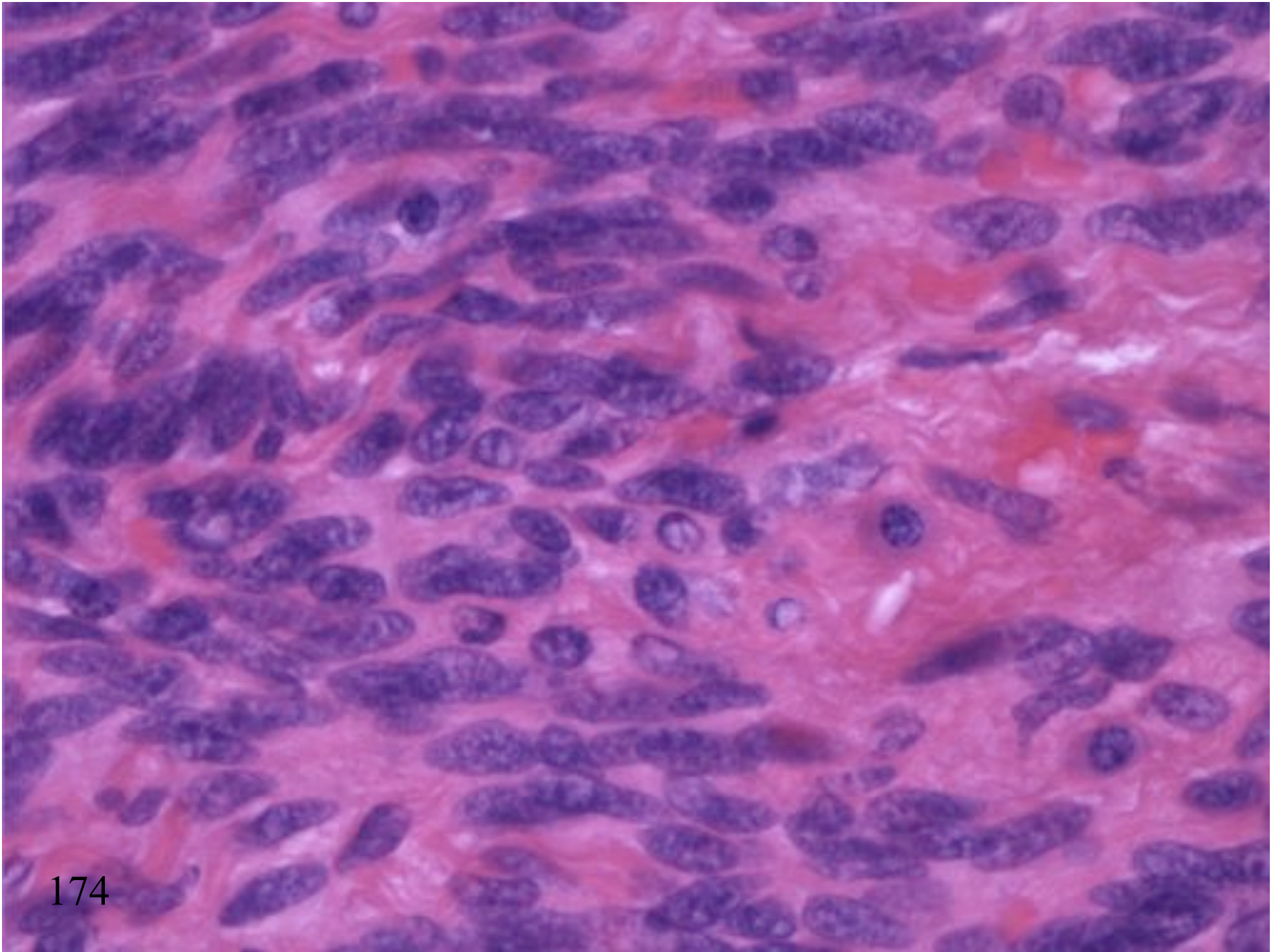


FAT

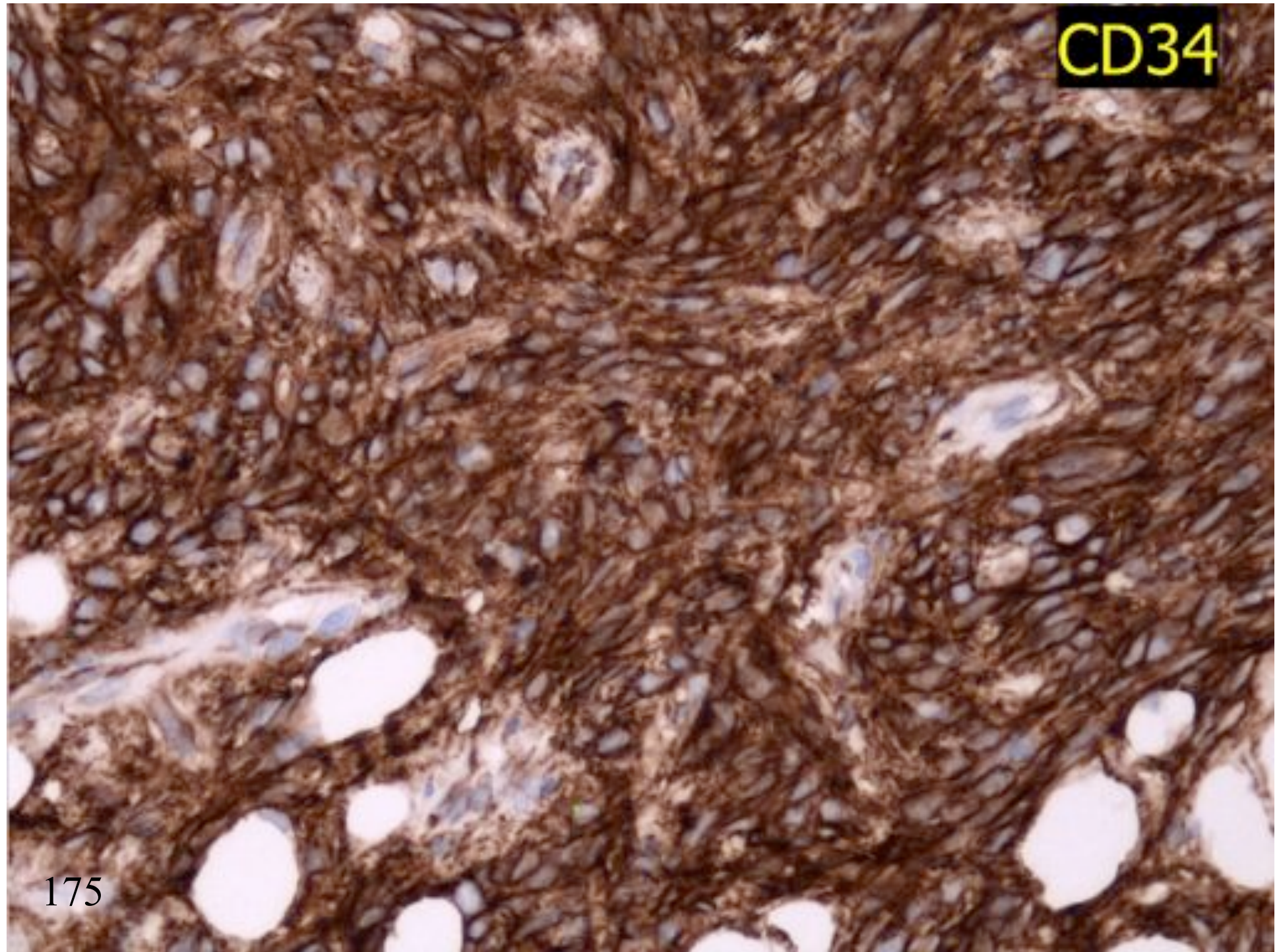








CD34



175

# FAT SUMMARY

1. Atrophic fat
2. Cellular spindle cell lipoma.
3. Pleomorphic lipoma

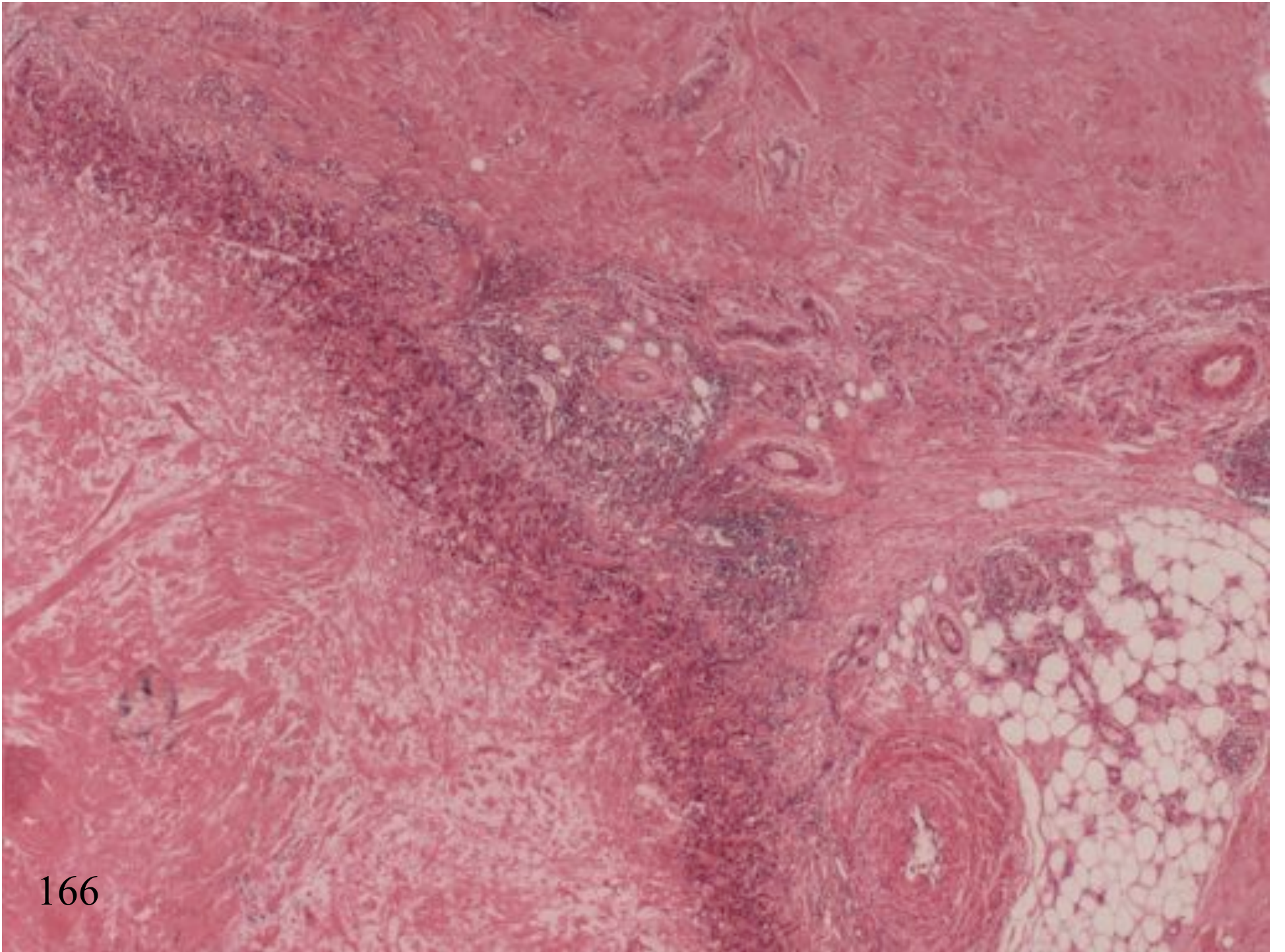
# TUMOURS WITH VACUOLES

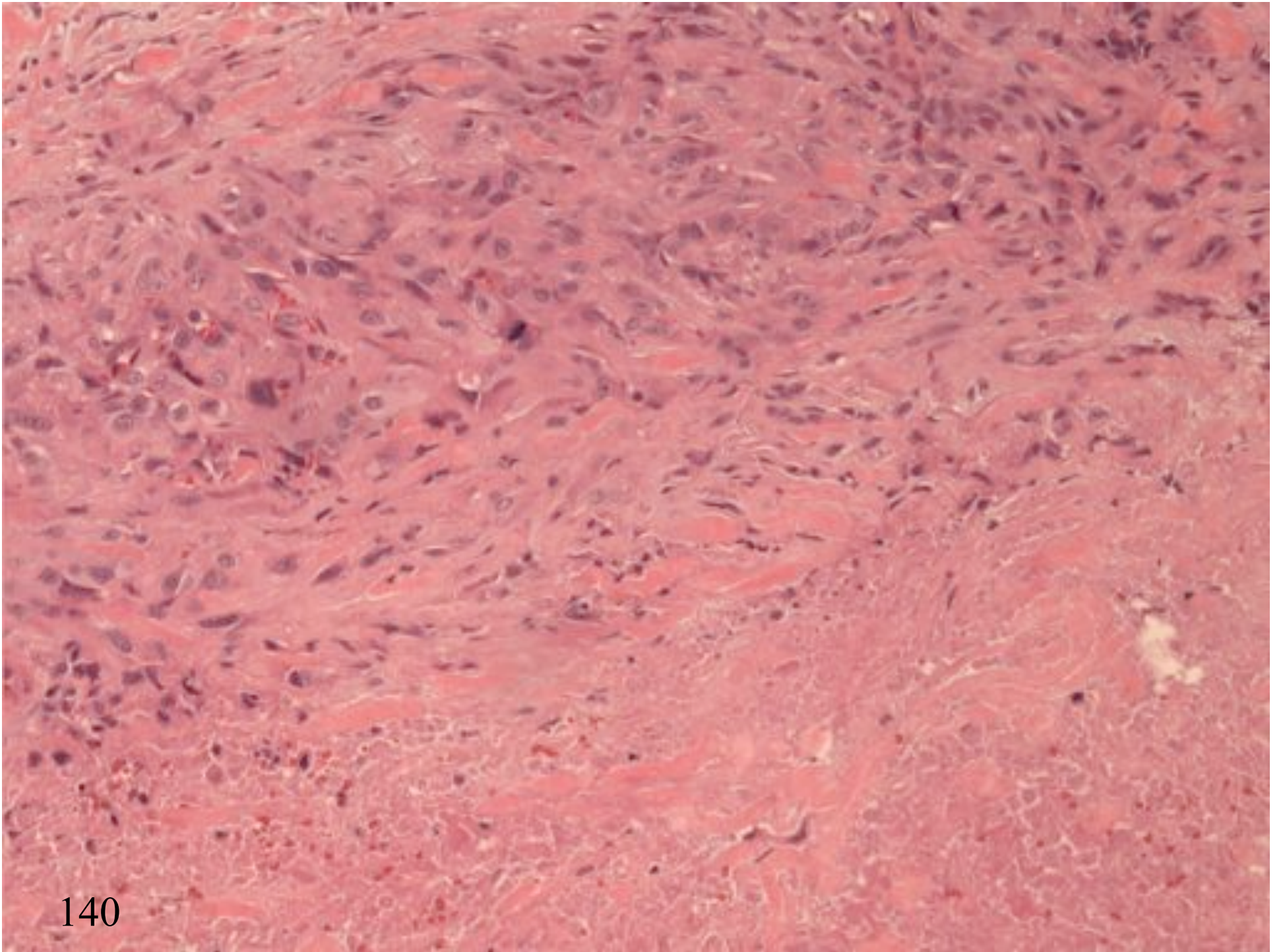


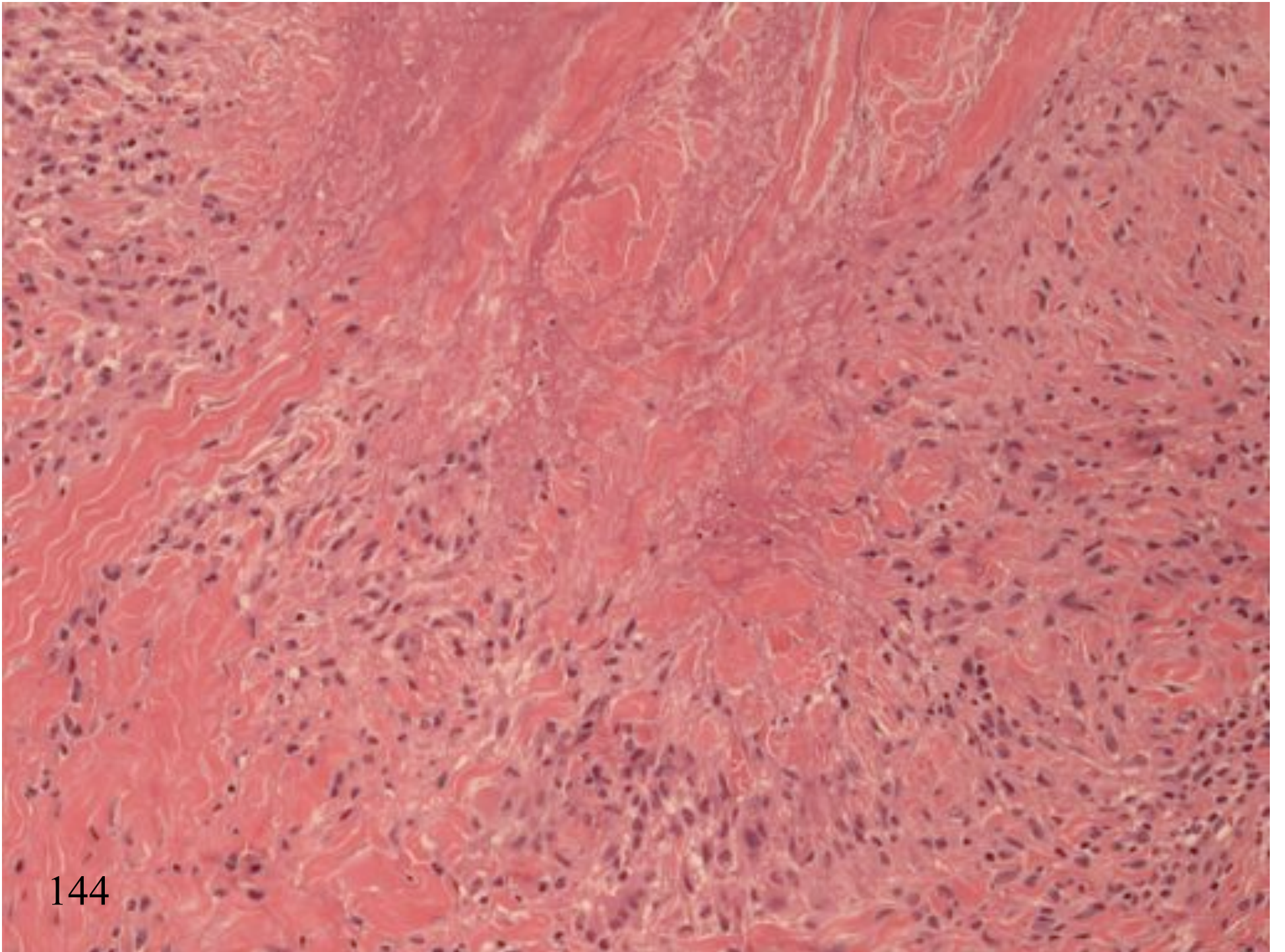
# TUMOURS WITH VACUOLES

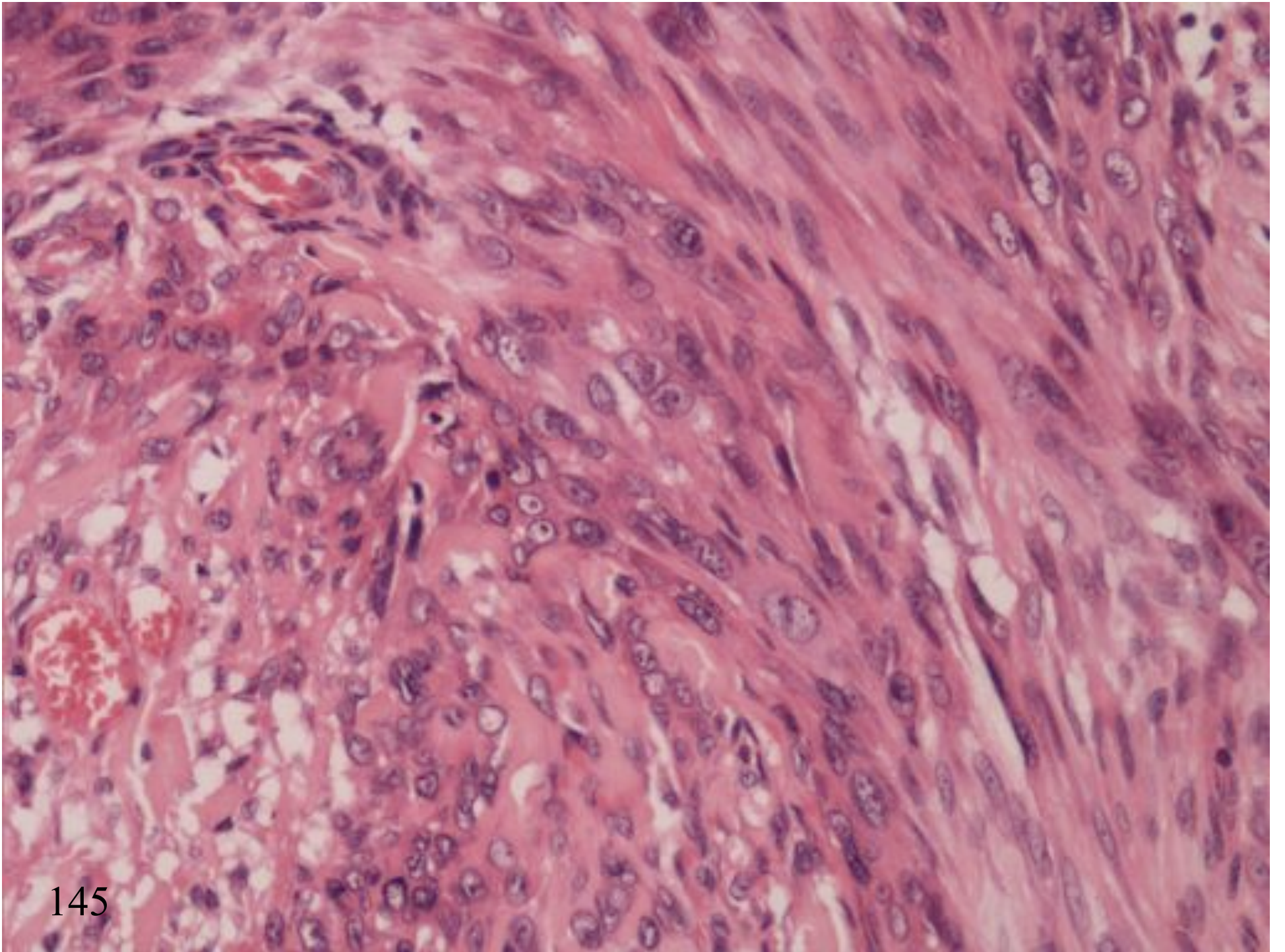
- Adenocarcinoma
- Melanoma
- Lymphoma
- Sarcoma

NECROBIOTIC GRANULOMA  
VS  
EPITHELIOID SARCOMA



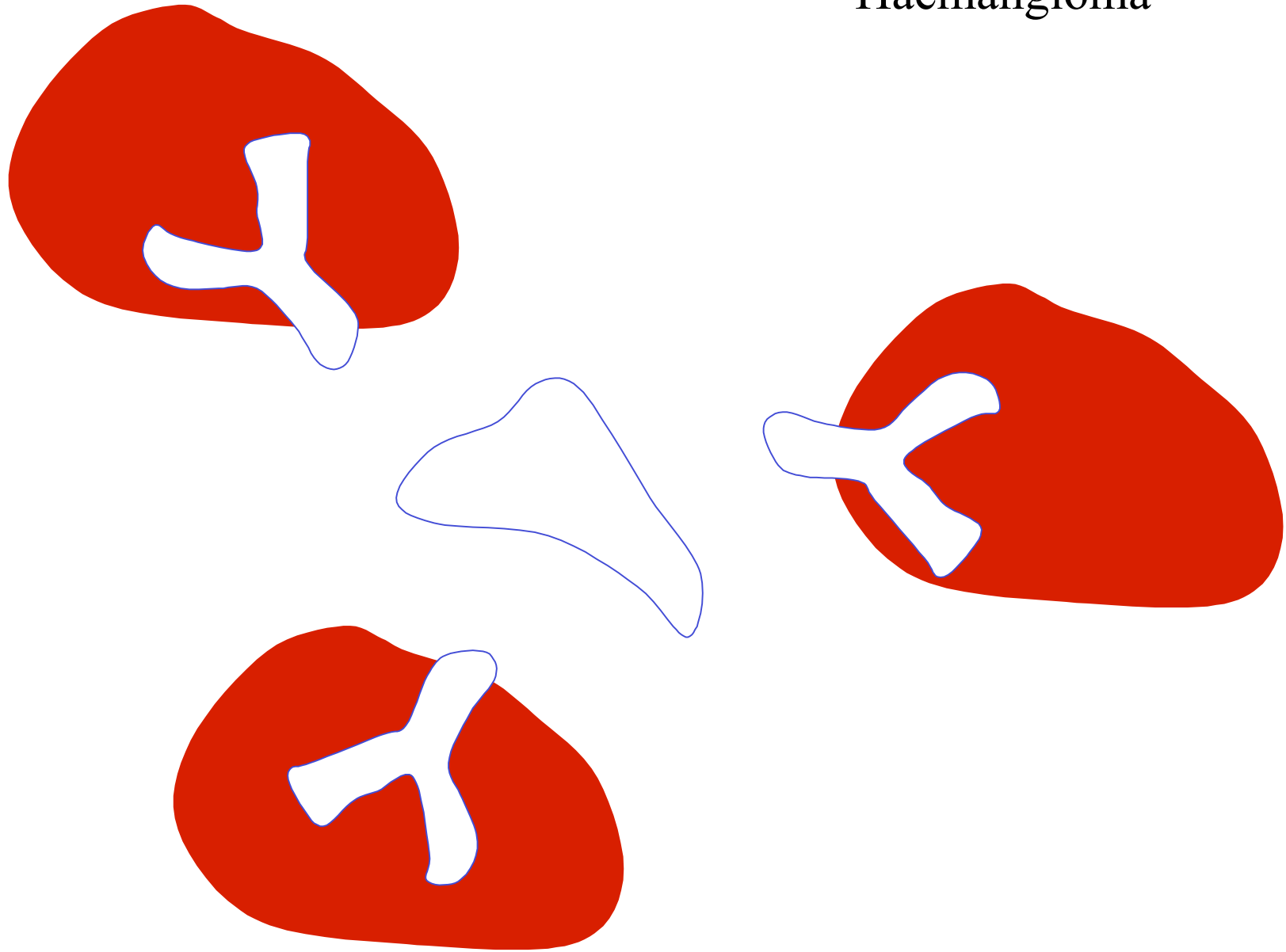




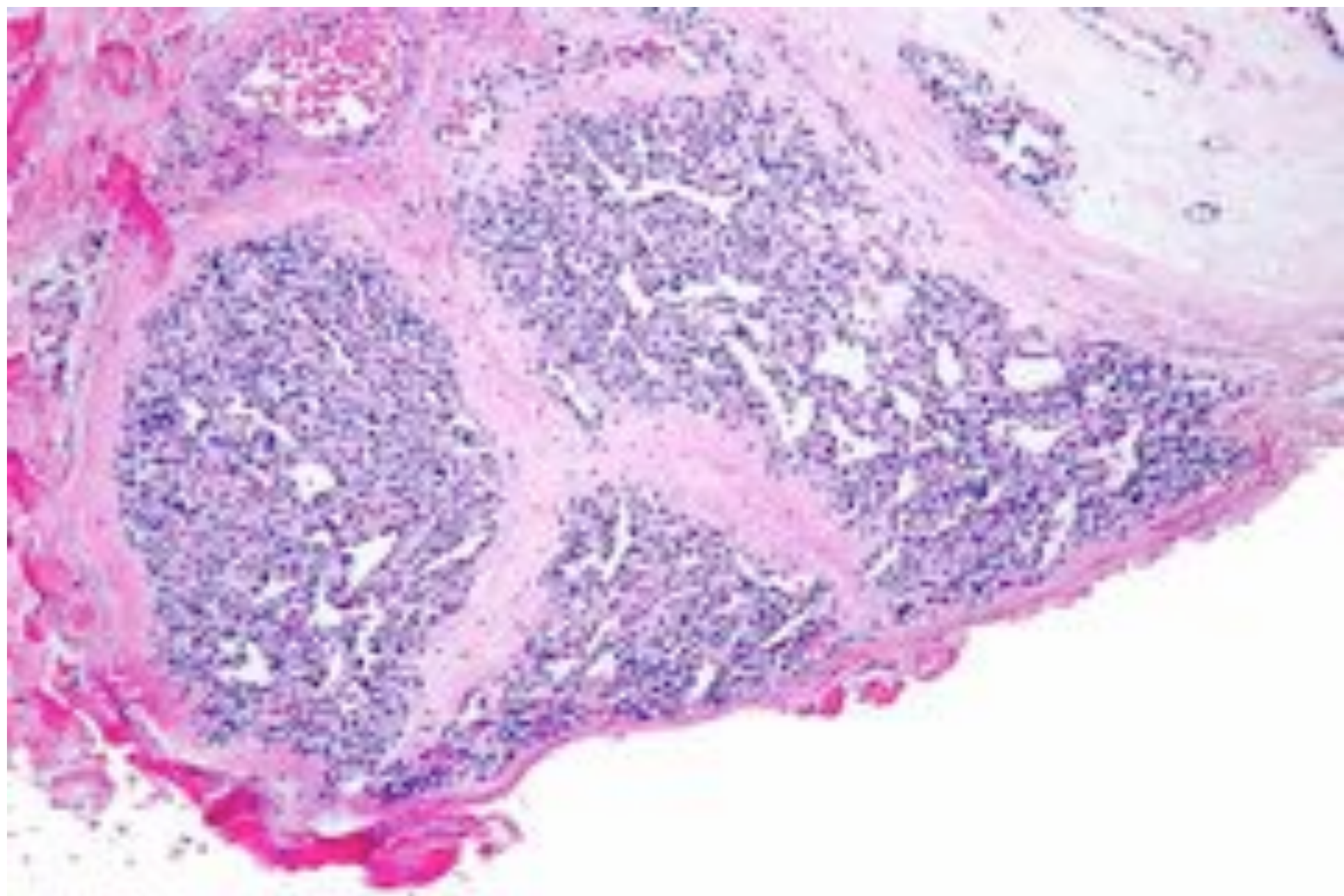


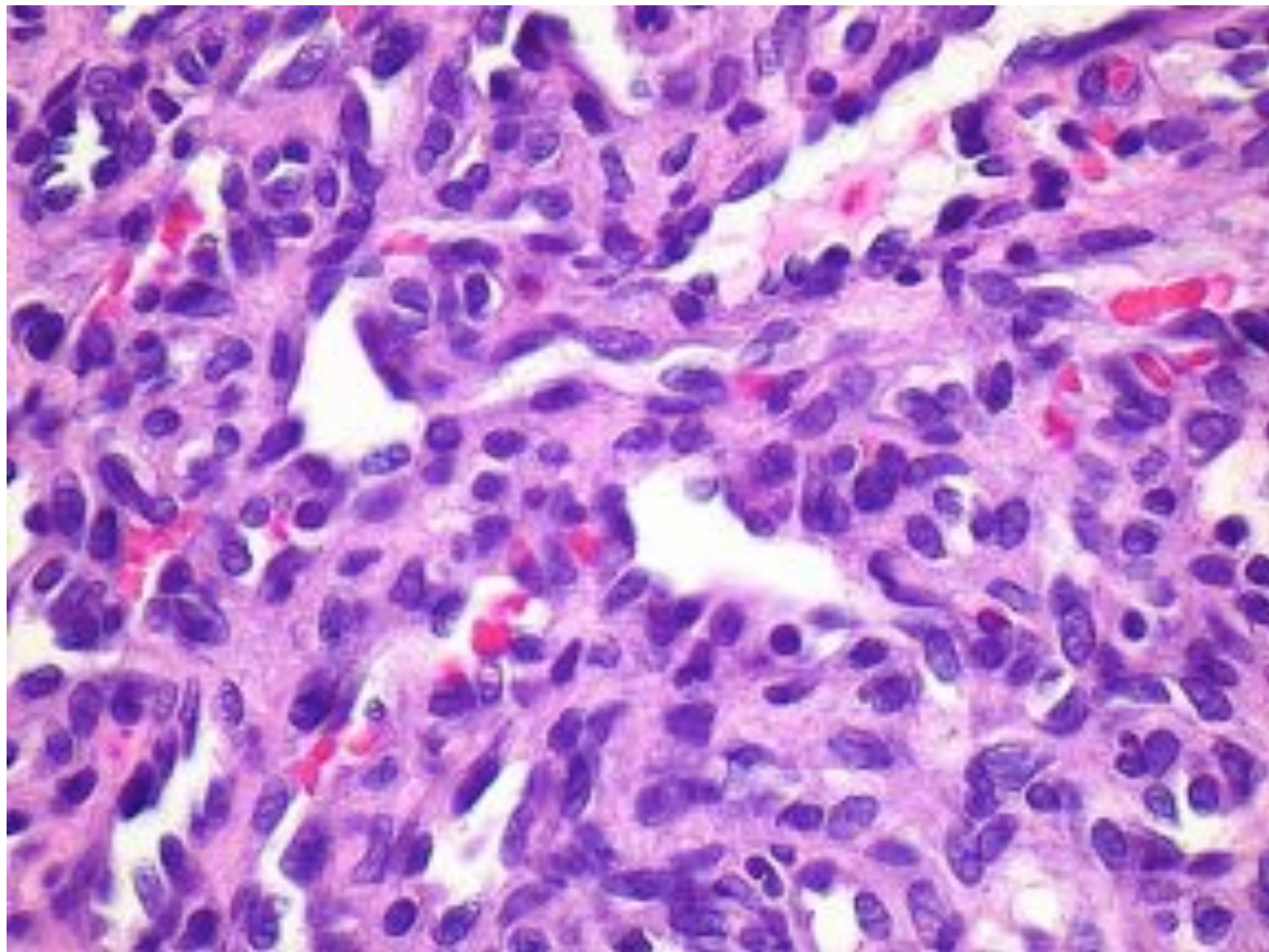
# VASCULAR PROLIFERATIONS

# Haemangioma





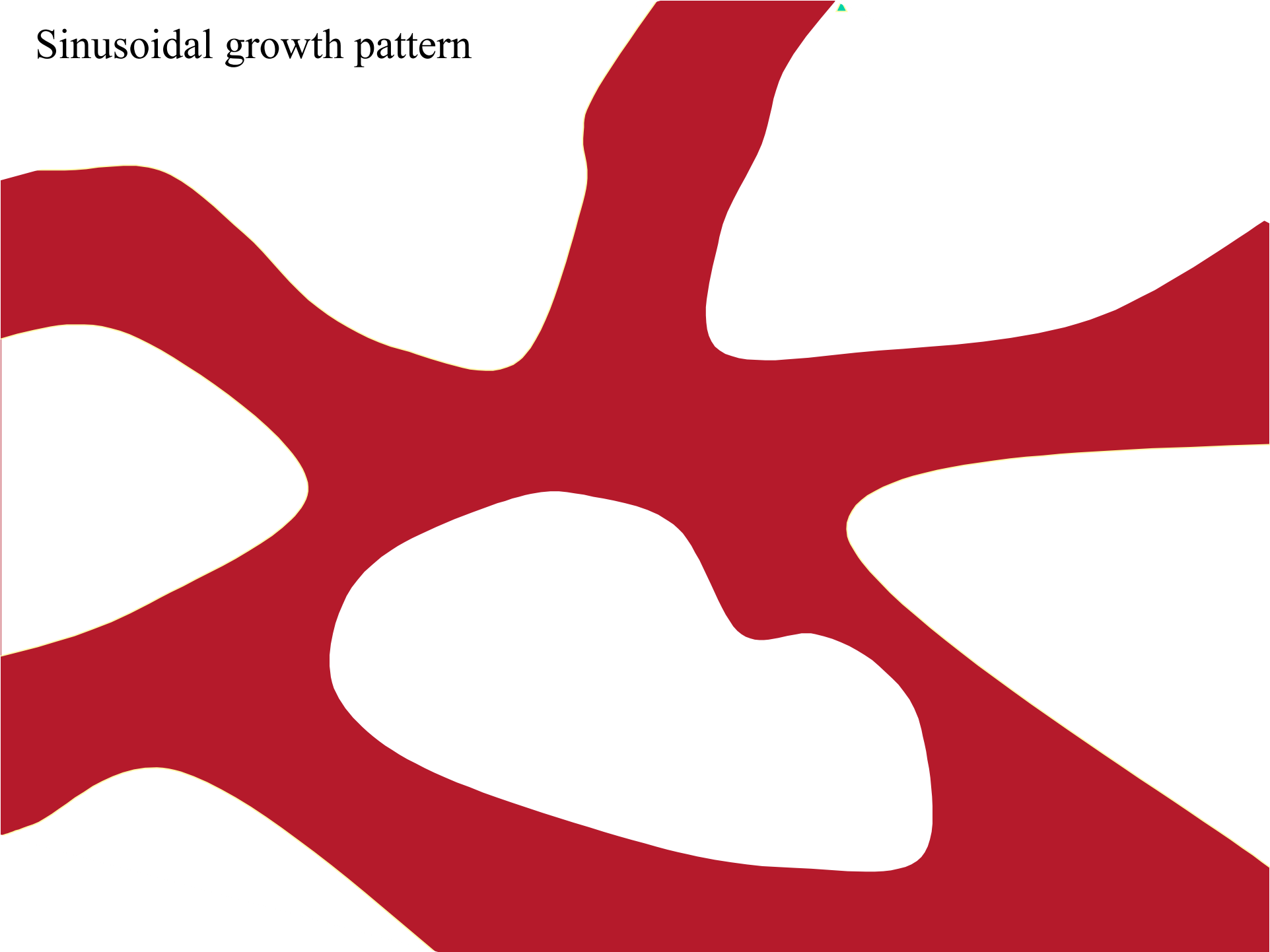


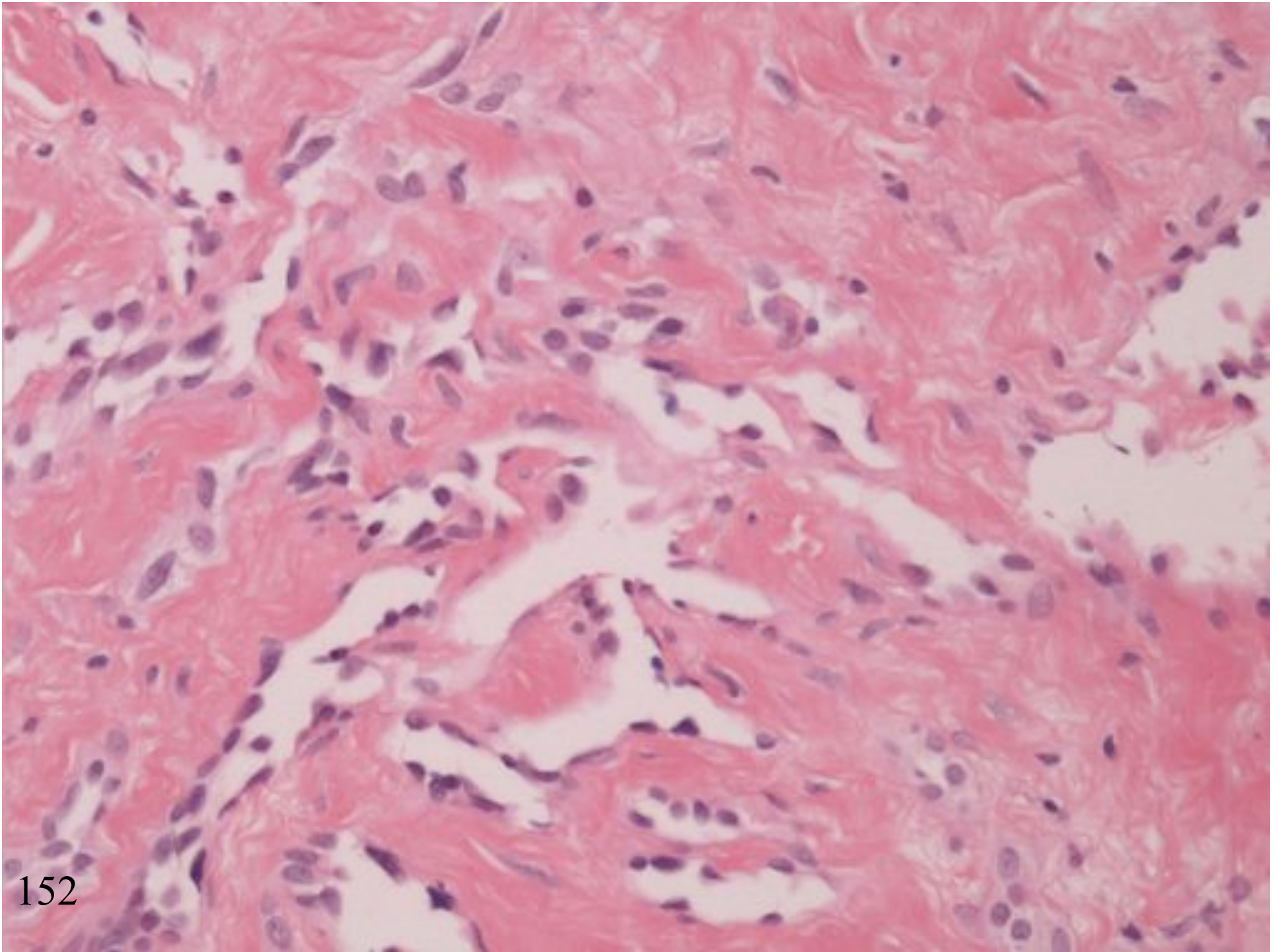


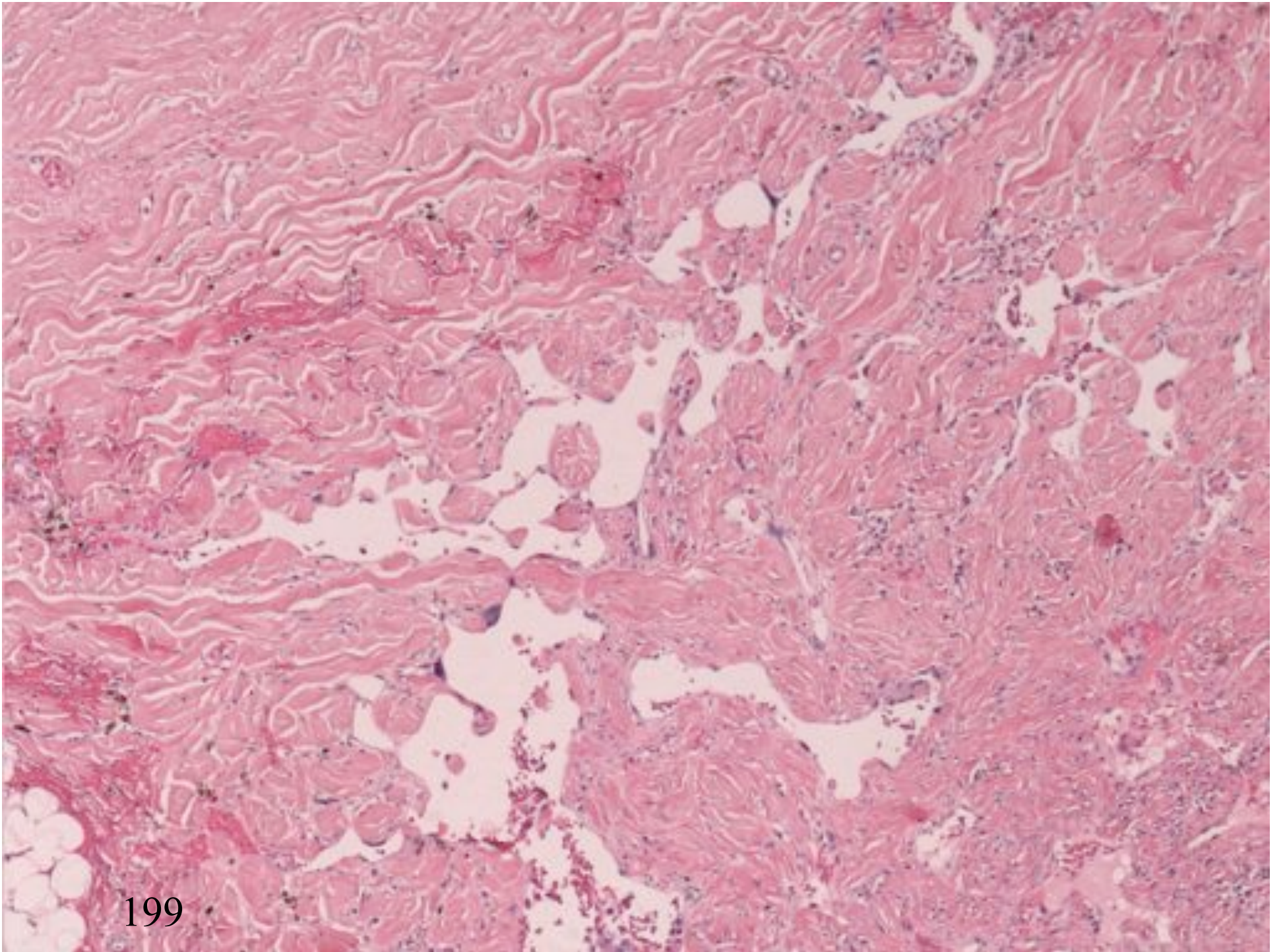
# HAEMANGIOMA

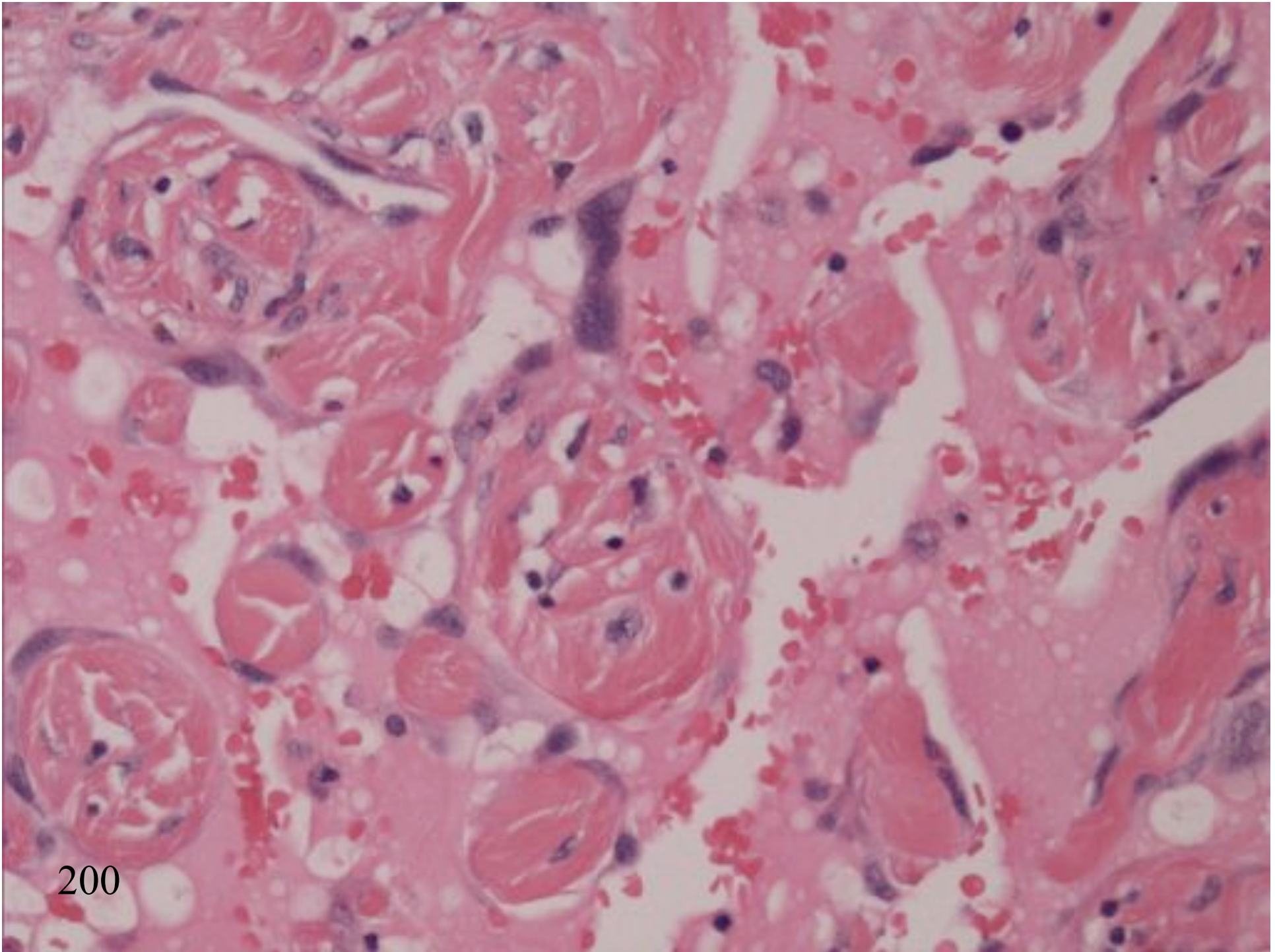
- Lobular
- Large supplying vessel with ordered branching
- Smooth muscle in walls (SMA)

Sinusoidal growth pattern

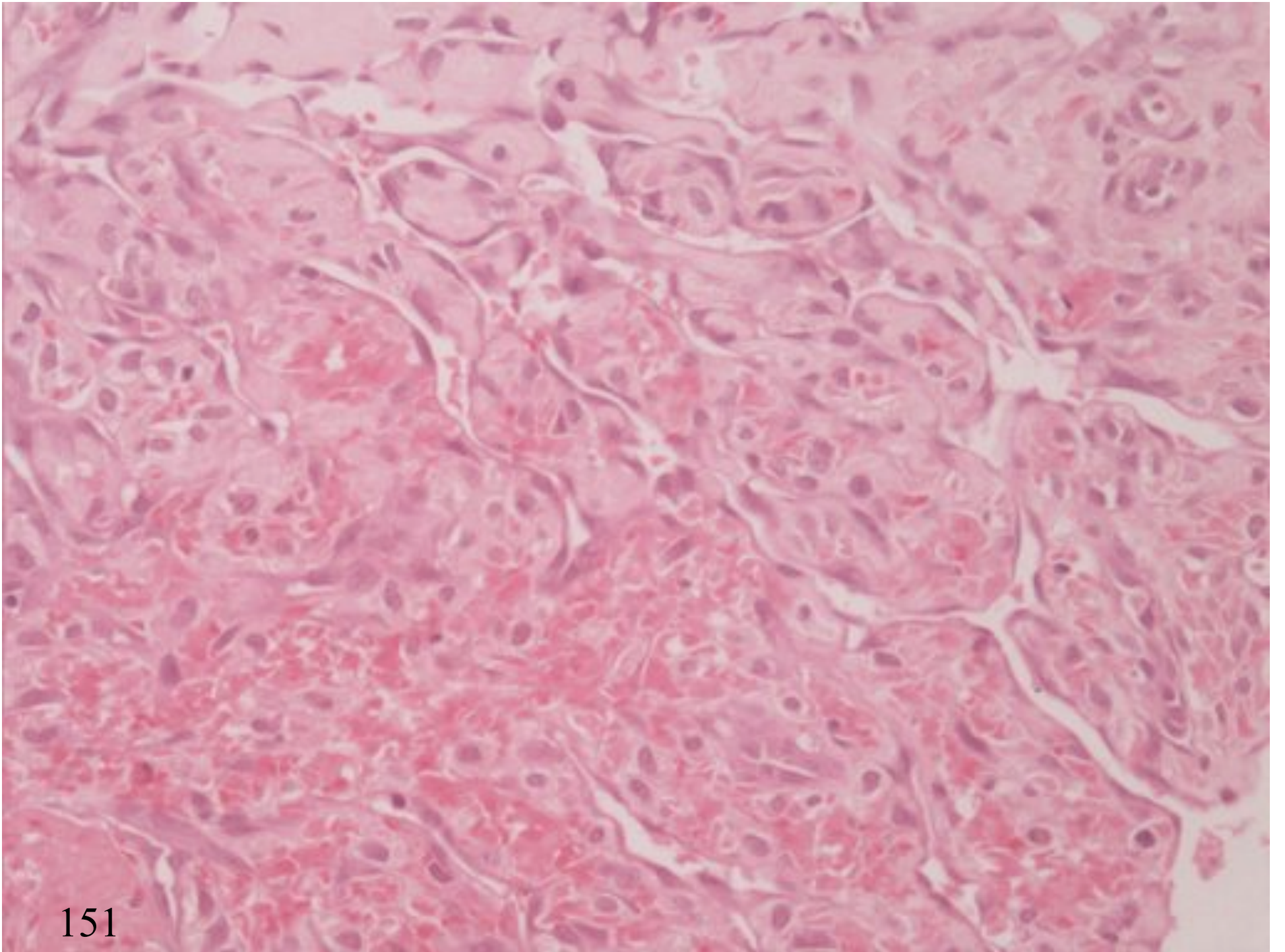








200





# SINUSOIDAL HAEMANGIOMA

- Well circumscribed
- No atypia/multi-layering/atypical mitoses
- Bland

# VASCULAR LESIONS SUMMARY

1. Cellular capillary haemangioma
2. Papillary endothelial hyperplasia.
3. Sinusoidal haemangioma
4. CD31 positive macrophages

# HAEMANGIOPERICYTIC VASCULATURE

- Solitary fibrous tumour
- Deep benign fibrous histiocytoma
- Synovial sarcoma
- Mesenchymal chondrosarcoma

# INTRAVASCULAR SOFT TISSUE TUMOURS

# INTRAVASCULAR TUMOURS

- Myofibroma
- Intravenous leiomyomatosis
- Leiomyosarcoma
- Angiomyolipoma
- Tenosynovial giant cell tumour

# ENDOTHELIAL INTRAVASCULAR TUMOURS

- Papillary endothelial hyperplasia
- Pyogenic granuloma
- Epithelioid haemangioma
- Epithelioid haemangio-endothelioma